

Sonoma County Community College District

Redistricting Options, September 13, 2016

The following maps and data present different arrangements of districts in order to inform the Board of Trustees and community as they engage in a process of redistricting.

The population data used for these maps is from the 2010 US Census. According to standard practice, a reformation of the districts in 2016 would still utilize this most recent real-count dataset.

In addition to the population data, each of the plans provides an approximated count from the American Community Survey of the US Census for Citizen Voting Age Population (CVAP). Also known as the “eligible voter population” this allows us to understand any voting rights act implications of different plans, particularly how they might impact protected classes.

The geographic boundaries for the district were obtained from both the Community College District itself, and the county registrars in Sonoma, Marin and Mendocino Counties. The Marin and Mendocino portions of the district account for a small percentage of the overall population, just 431 people in Marin and 3,892 in Mendocino, but it is necessary to consider this portion in the overall plan.

The maps presented are as follows:

Current Lines

The lines established in 2011 are presented as a frame of reference. Based on discussion in public board hearings, and a review of the district lines, these boundaries were primarily drawn based on underlying school districts. The plan includes four single-member districts and one three-member districts. They were balanced based solely on the Sonoma County population, and as a result are greater than the standard 5% total deviation common in redistricting.

Option A – (<http://tinyurl.com/SRJC-OPTION-A>)

The first version of new lines is also drawn primarily with the interest of maintaining school district boundaries. It also creates all districts as single-member entities and takes into consideration discussion from the public regarding the communities of interest within the portion of the district previously drawn as the 3-4-5 multi-member seat. This plan meets guidelines for equal representation, with no district at more than 2% beyond the average population, and a total deviation of less than 5%.

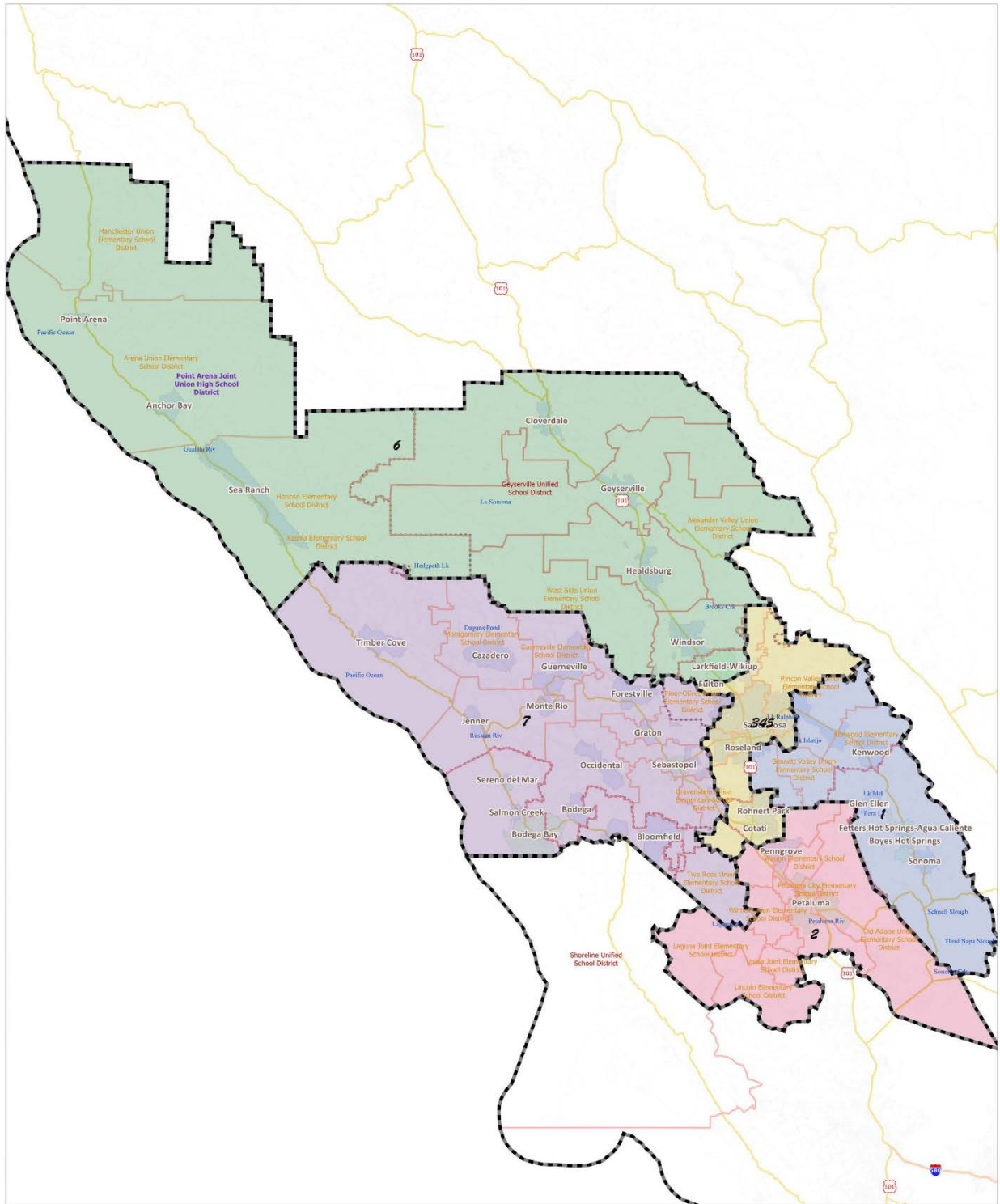
Option B – (<http://tinyurl.com/SRJC-OPTION-B>)

This version of the new lines also creates single-member districts, but, instead of relying solely on local school district boundaries, it also seeks to preserve city boundaries, and where several district divisions are made it follows lines created by the non-partisan State Redistricting Commission during statewide redistricting.

Community Plans 1 and 2

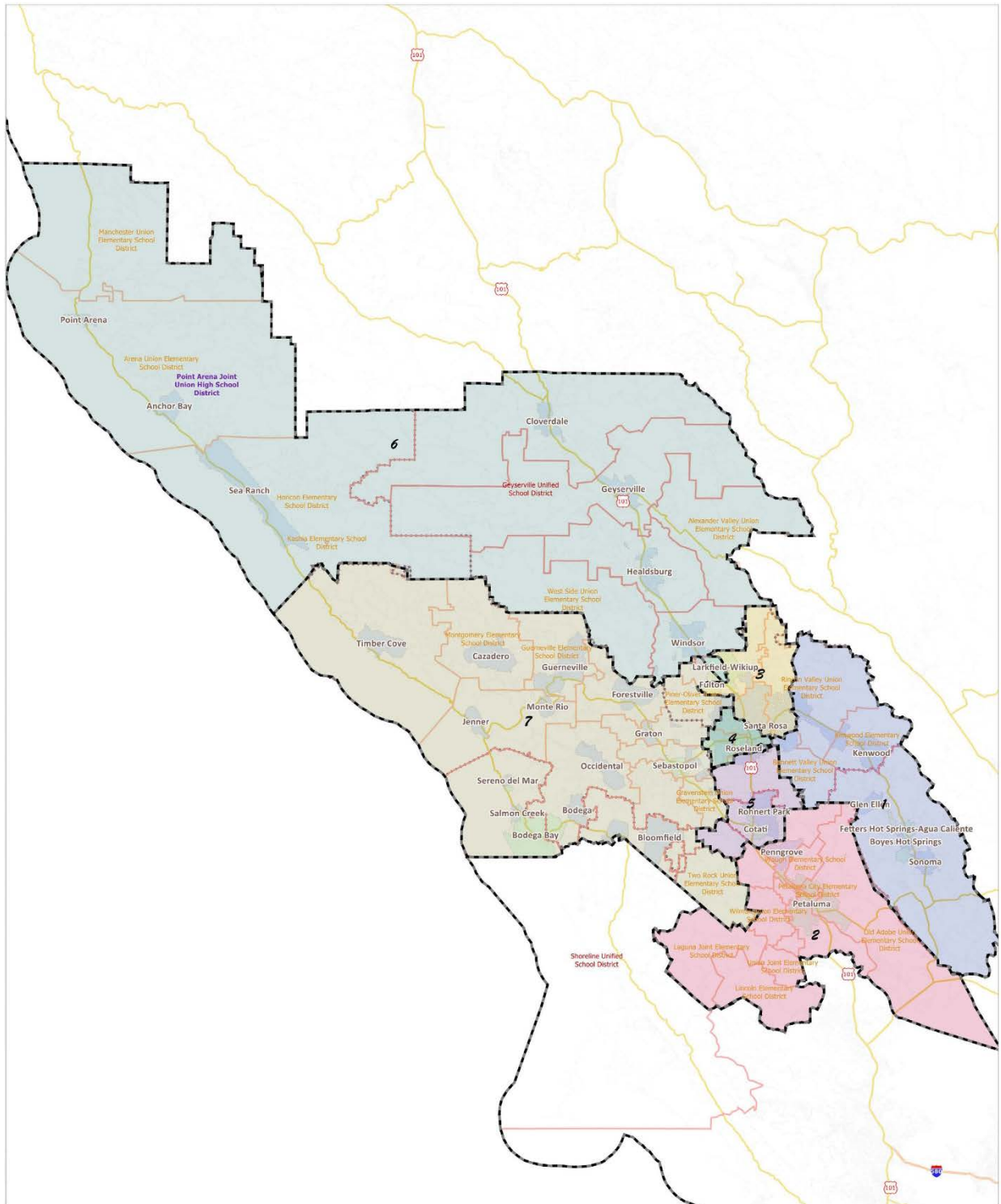
These plans are presented to the board as a part of absorbing the public input to date. These plans also were drawn only with the Sonoma County population, so their deviations are higher than allowable under redistricting best practices. However, they do show some of the tradeoffs made when trying to preserve communities of interest within a plan that does not impact the districts surrounding the 3-4-5 multi-member seat.

Sonoma County Community College District Existing District Lines (2011)



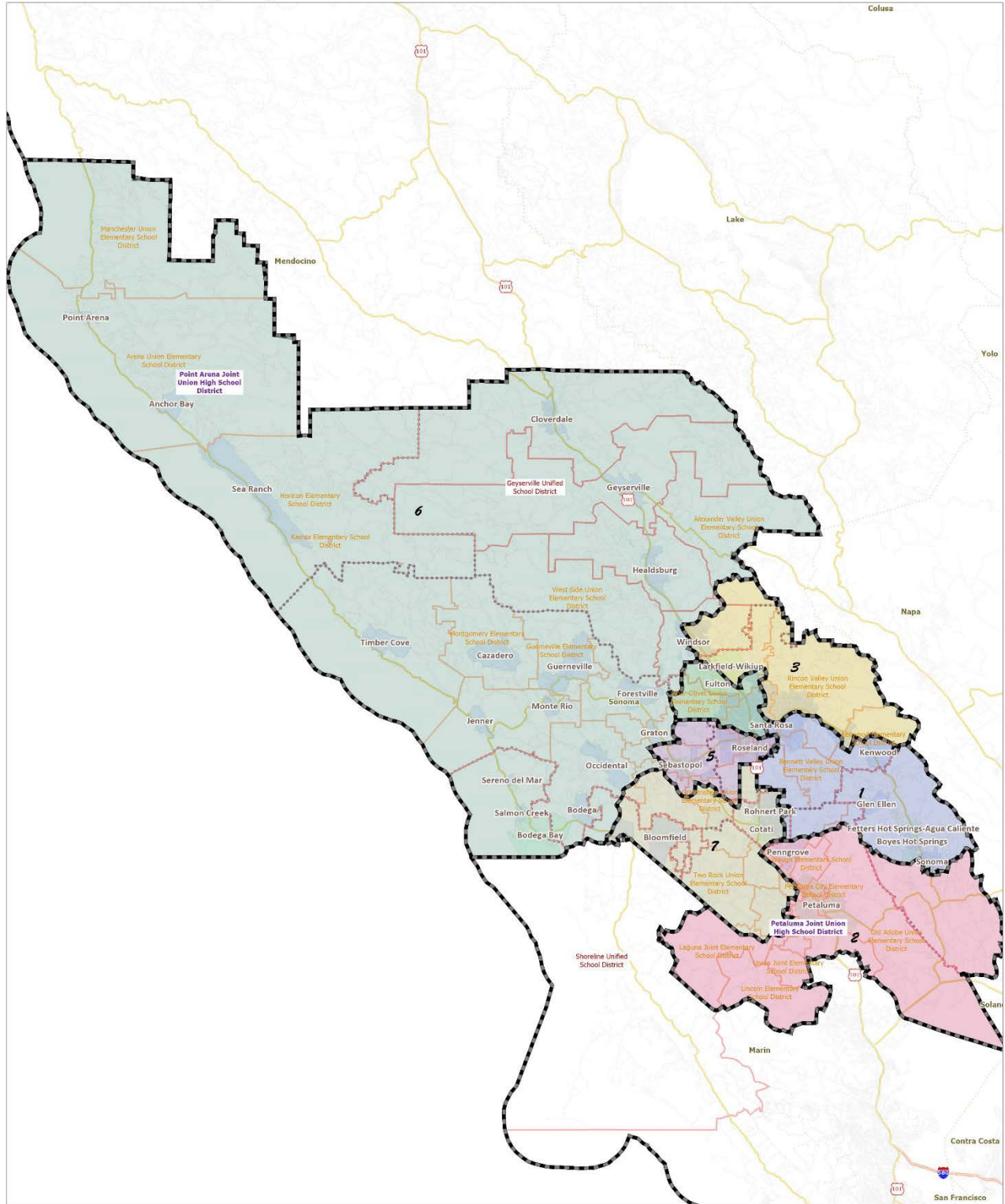
Seat	Population	Deviation		CVAP	LATINO CVAP		WHITE CVAP		BLACK CVAP		ASIAN CVAP	
1	68,797	(856)	-1%	49,490	6,112	12%	40,305	81%	483	1%	1,236	2%
2	70,861	1,208	2%	49,973	5,641	11%	40,668	81%	345	1%	2,160	4%
345	207,132	(1,827)	-1%	140,884	23,216	16%	102,366	73%	2,912	2%	6,149	4%
6	73,289	3,636	5%	52,446	8,399	16%	40,883	78%	452	1%	1,214	2%
7	67,493	(2,160)	-3%	53,012	4,511	9%	45,388	86%	705	1%	1,056	2%

Sonoma County Community College District Redistricting Option A



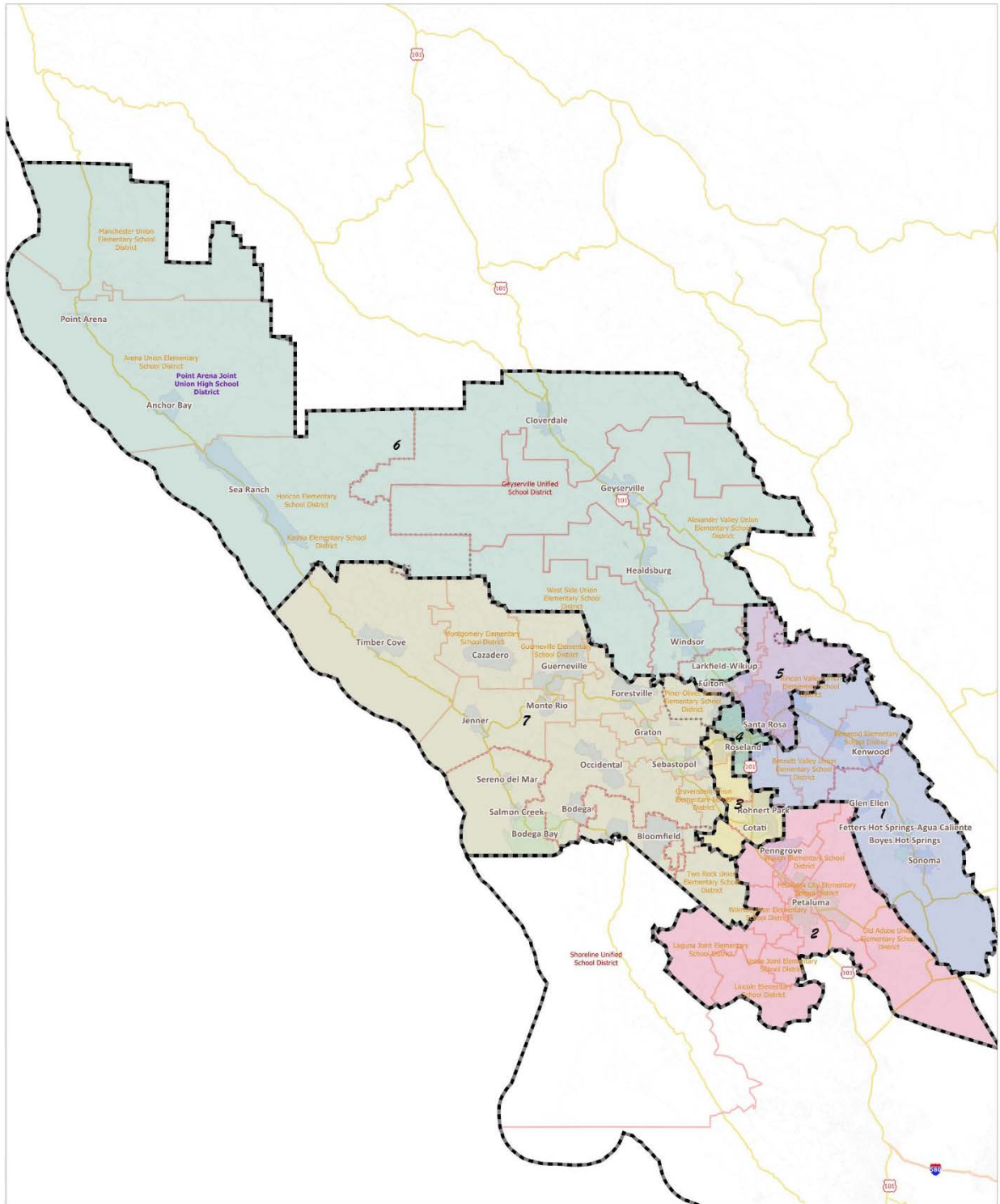
Seat	Population	Deviation		CVAP	LATINO CVAP		WHITE CVAP		BLACK CVAP		ASIAN CVAP	
1	68,504	(1,149)	-2%	50,893	5,457	11%	42,594	84%	348	1%	1,302	3%
2	70,861	1,208	2%	49,973	5,641	11%	40,668	81%	345	1%	2,160	4%
3	70,376	723	1%	51,145	5,595	11%	40,632	79%	1,000	2%	1,927	4%
4	69,479	(174)	0%	41,250	10,188	25%	26,089	63%	958	2%	2,019	5%
5	69,984	331	0%	49,032	8,141	17%	35,208	72%	1,087	2%	2,195	4%
6	69,848	195	0%	49,561	8,109	16%	38,479	78%	410	1%	1,144	2%
7	68,520	(1,133)	-2%	53,936	4,752	9%	45,945	85%	742	1%	1,072	2%

Sonoma County Community College District Redistricting Option B



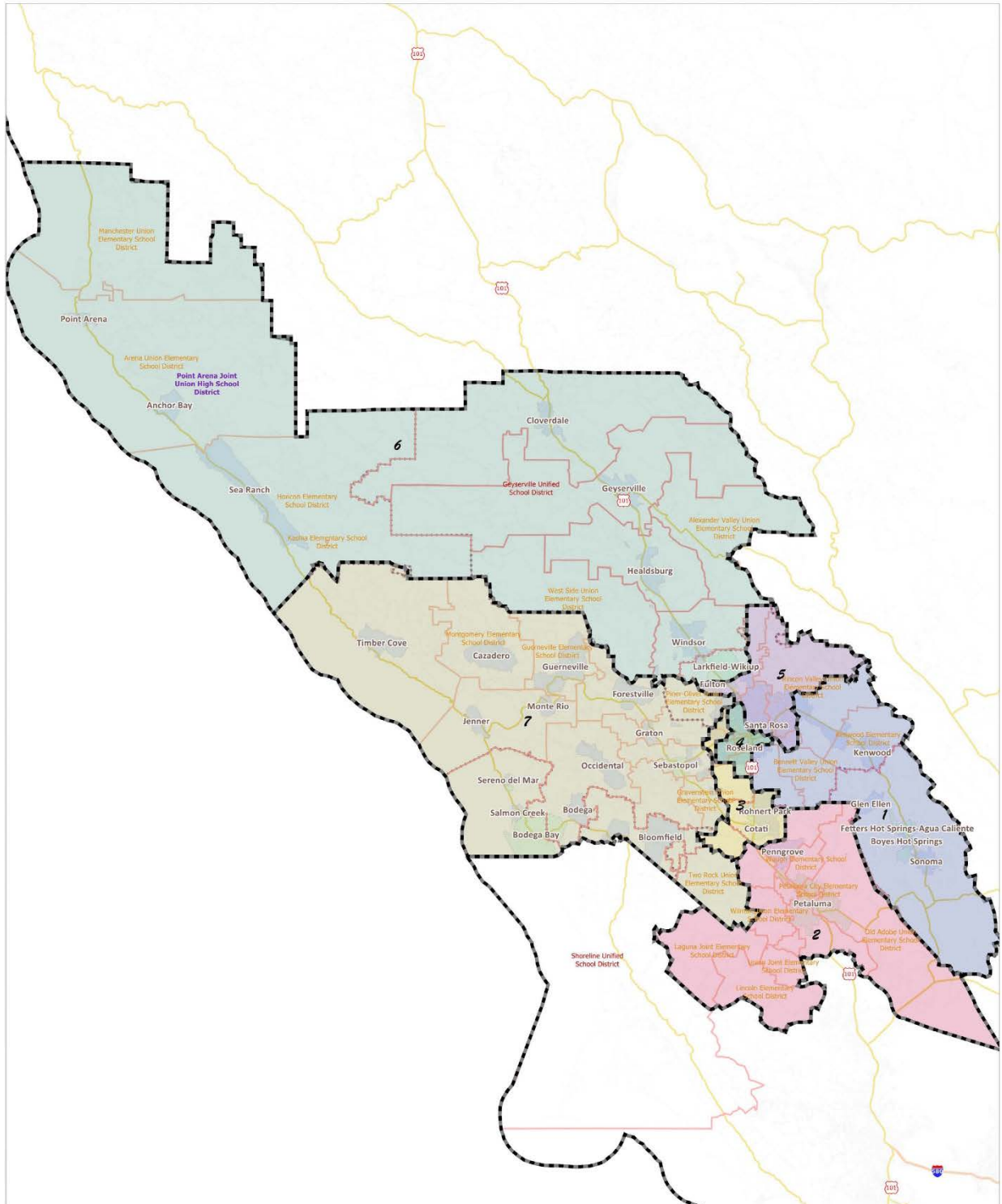
Seat	Population	Deviation		CVAP	LATINO CVAP		WHITE CVAP		BLACK CVAP		ASIAN CVAP	
1	71,352	1,699	2%	51,975	6,094	12%	42,909	83%	478	1%	1,225	2%
2	69,633	(20)	0%	49,461	5,611	11%	40,350	82%	355	1%	2,028	4%
3	68,783	(870)	-1%	50,339	5,523	11%	41,176	82%	441	1%	1,532	3%
4	69,840	187	0%	46,827	7,965	17%	33,792	72%	1,222	3%	1,974	4%
5	69,398	(255)	0%	44,361	9,198	21%	29,450	66%	1,062	2%	2,322	5%
6	68,741	(912)	-1%	51,007	6,618	13%	41,653	82%	498	1%	897	2%
7	69,825	172	0%	51,805	6,860	13%	40,275	78%	847	2%	1,838	4%

Sonoma County Community College District Redistricting 345 Advocates V1



Seat	Population	Deviation	CVAP	LATINO CVAP	WHITE CVAP	BLACK CVAP	ASIAN CVAP
1	68,797	(856) -1%	49,490	6,112 12%	40,305 81%	483 1%	1,236 2%
2	70,861	1,208 2%	49,973	5,641 11%	40,668 81%	345 1%	2,160 4%
3	69,305	(348) 0%	51,136	9,209 18%	35,802 70%	1,184 2%	2,419 5%
4	68,508	(1,145) -2%	37,336	8,694 23%	24,042 64%	903 2%	2,016 5%
5	69,319	(334) 0%	52,392	5,313 10%	42,522 81%	825 2%	1,718 3%
6	73,289	3,636 5%	52,446	8,399 16%	40,883 78%	452 1%	1,214 2%
7	67,493	(2,160) -3%	53,012	4,511 9%	45,388 86%	705 1%	1,056 2%

Sonoma County Community College District Redistricting 345 Advocates V2



Seat	Population	Deviation	CVAP	LATINO CVAP	WHITE CVAP	BLACK CVAP	ASIAN CVAP
1	68,797	(856) -1%	49,490	6,112 12%	40,305 81%	483 1%	1,236 2%
2	70,861	1,208 2%	49,973	5,641 11%	40,668 81%	345 1%	2,160 4%
3	69,454	(199) 0%	51,276	8,506 17%	37,674 73%	894 2%	1,951 4%
4	68,359	(1,294) -2%	37,196	9,397 25%	22,175 60%	1,193 3%	2,484 7%
5	69,319	(334) 0%	52,392	5,313 10%	42,522 81%	825 2%	1,718 3%
6	73,289	3,636 5%	52,446	8,399 16%	40,883 78%	452 1%	1,214 2%
7	67,493	(2,160) -3%	53,012	4,511 9%	45,388 86%	705 1%	1,056 2%

