

Santa Rosa Junior College  
2021 District Elections  
Data & Draft Maps



# Agenda

Things we will cover:

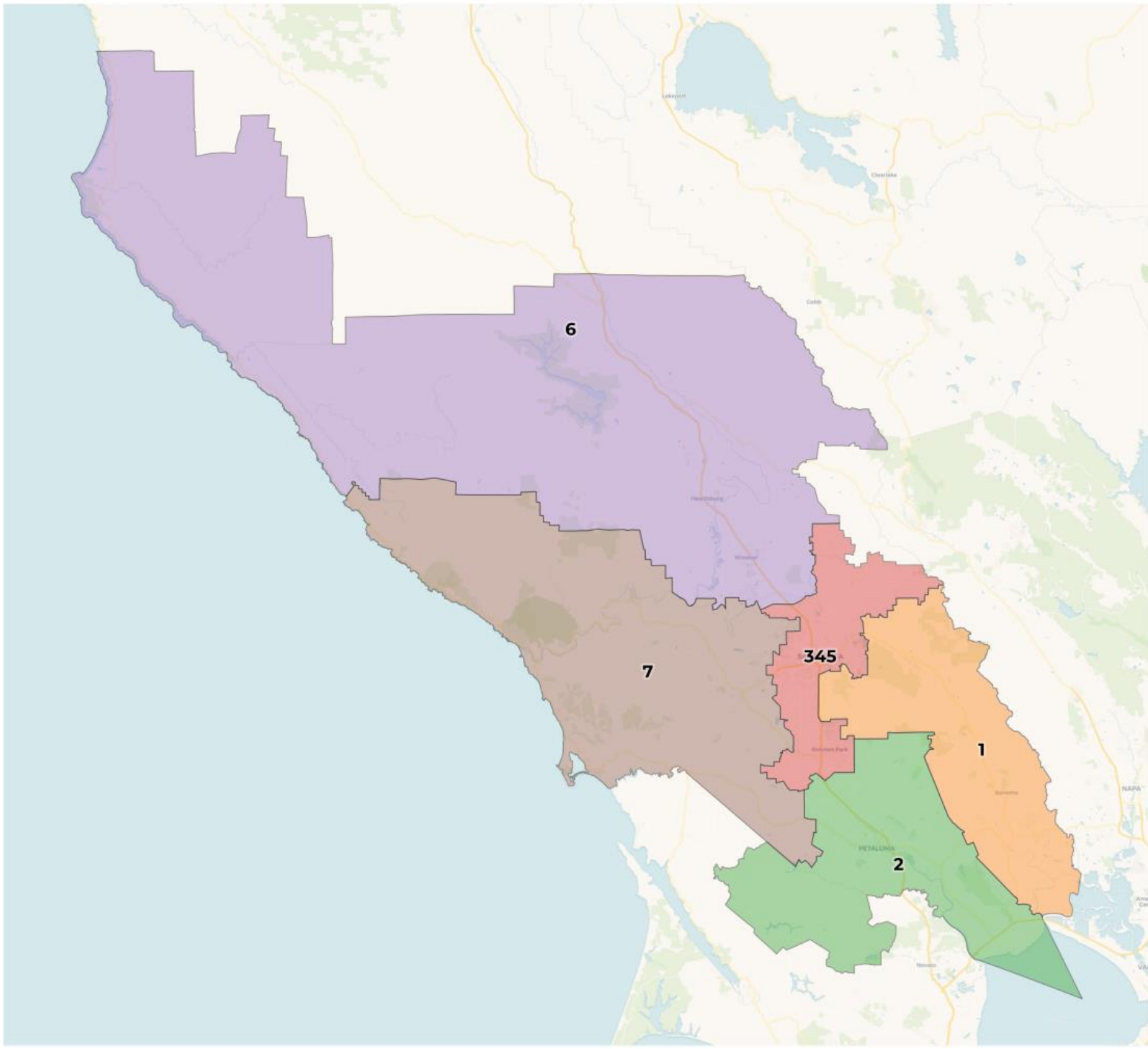
- Traditional Districting/Redistricting Principles
- Base map & data update
- Draft Maps A & B
- Public Hearing Schedule

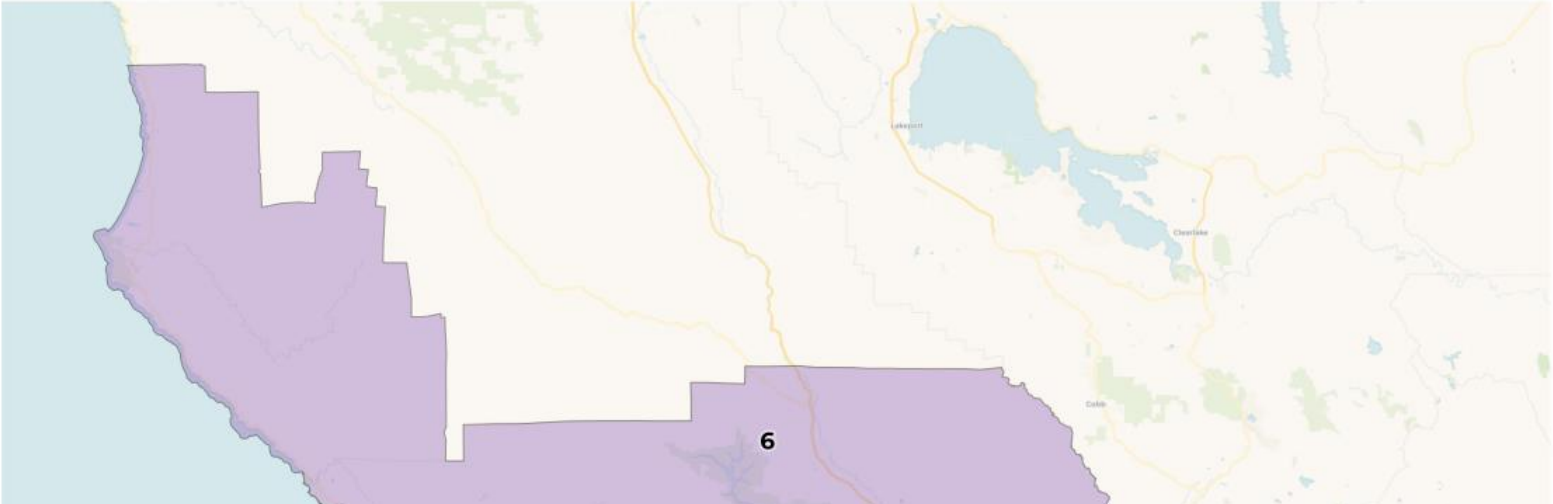
# Traditional Districting Principles

## Preventing a District from becoming a Gerrymander

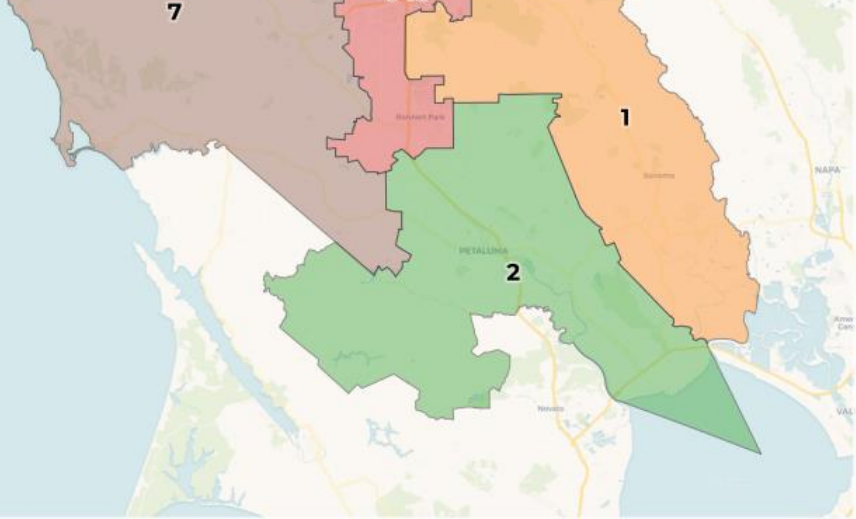
There are a number of criteria that have been used nationally and upheld by courts.

- Relatively equal size - people, not citizens
- Contiguous – districts should not hop/jump
- Maintain “*communities of interest*”
- Follow city/county/local government lines
- Keep districts compact – appearance/function

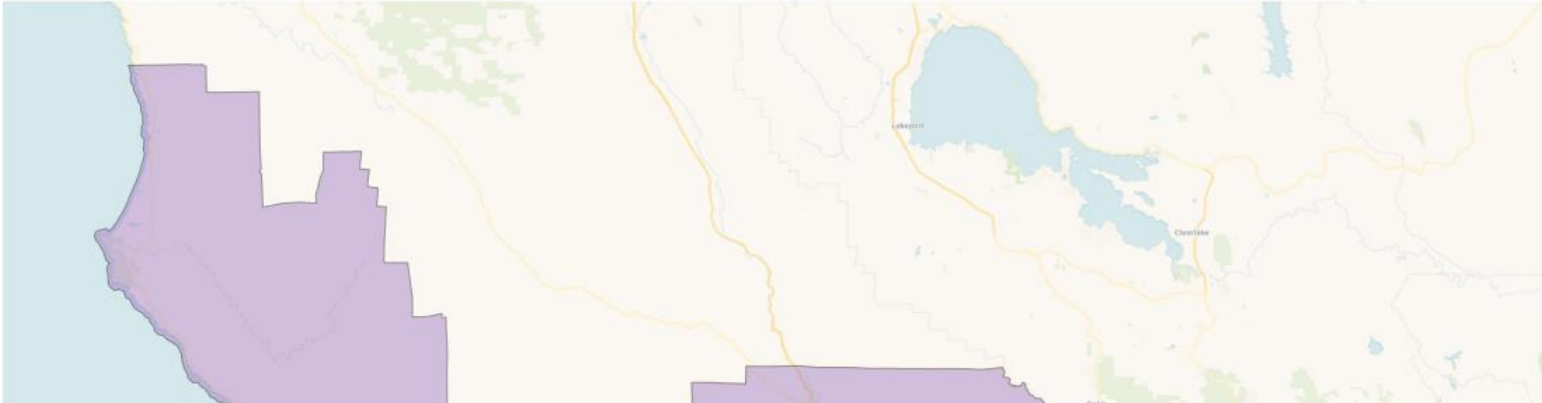




Area	1	2	3, 4, 5	6	7	<i>total</i>
<b>2020 Population</b>	68,657	72,779	212,905	72,728	67,034	<b>494,103</b>
<b>2010 Population</b>	68,721	70,967	206,921	73,921	67,598	<b>488,128</b>
<b>Growth/loss</b>	-64	1,812	5,984	-1,193	-564	<b>5,975</b>
<b>Percentage growth</b>	-0.1%	2.6%	2.9%	-1.6%	-0.8%	<b>1.2%</b>

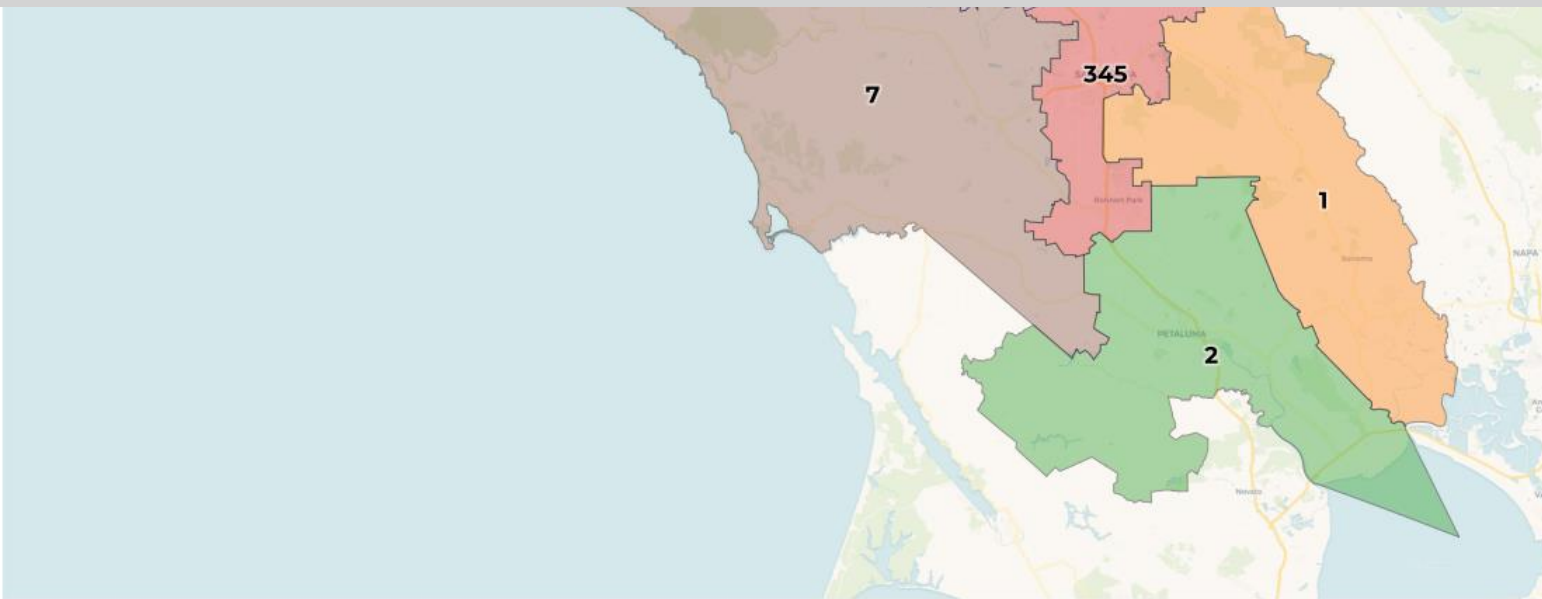


**Ideal trustee area  
size: 70,586**



## Citizen Voting Age Population (CVAP)

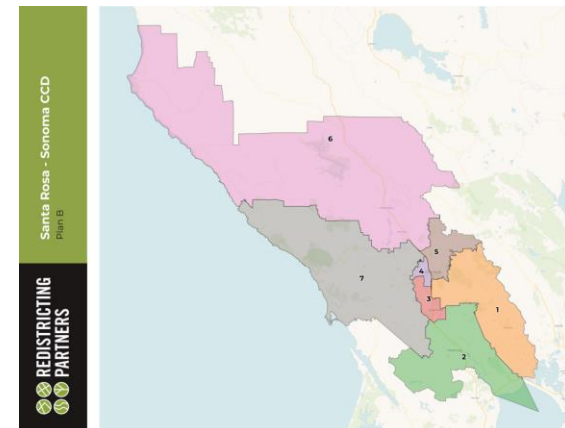
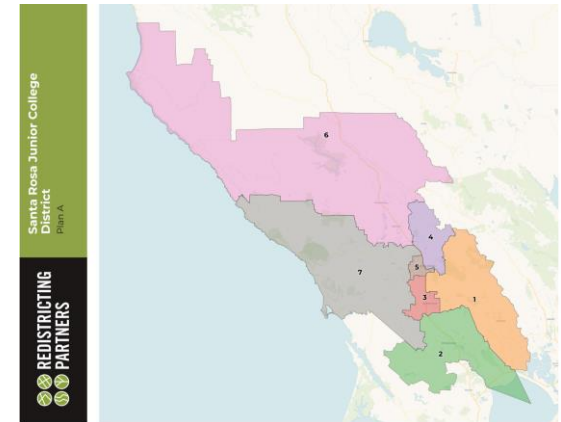
	1	2	345	6	7
Latino CVAP	6,426	6,309	26,873	10,476	5,600
Latino CVAP %	12.7%	11.7%	18.8%	19.4%	9.8%
Asian CVAP	1,960	2,140	6,462	1,319	1,101
Asian CVAP %	3.9%	4.0%	4.5%	2.4%	1.9%
Black CVAP	538	504	2,769	400	643
Black CVAP %	1.1%	0.9%	1.9%	0.7%	1.1%



# Draft Map Plans

Each draft plan is provided with both a PDF and Online Web-based format

- **Draft Map A** – (Prioritized criteria) Follows traditional redistricting principles; unites the Roseland neighborhood; minimal changes outside of districts 3, 4 and 5; uses freeways to divide Santa Rosa.
- **Draft Map B** - (Prioritized criteria) Follows traditional redistricting principles; minimal changes outside of districts 3, 4 and 5; unites the majority of the Roseland neighborhood; uses freeways to divide Santa Rosa.

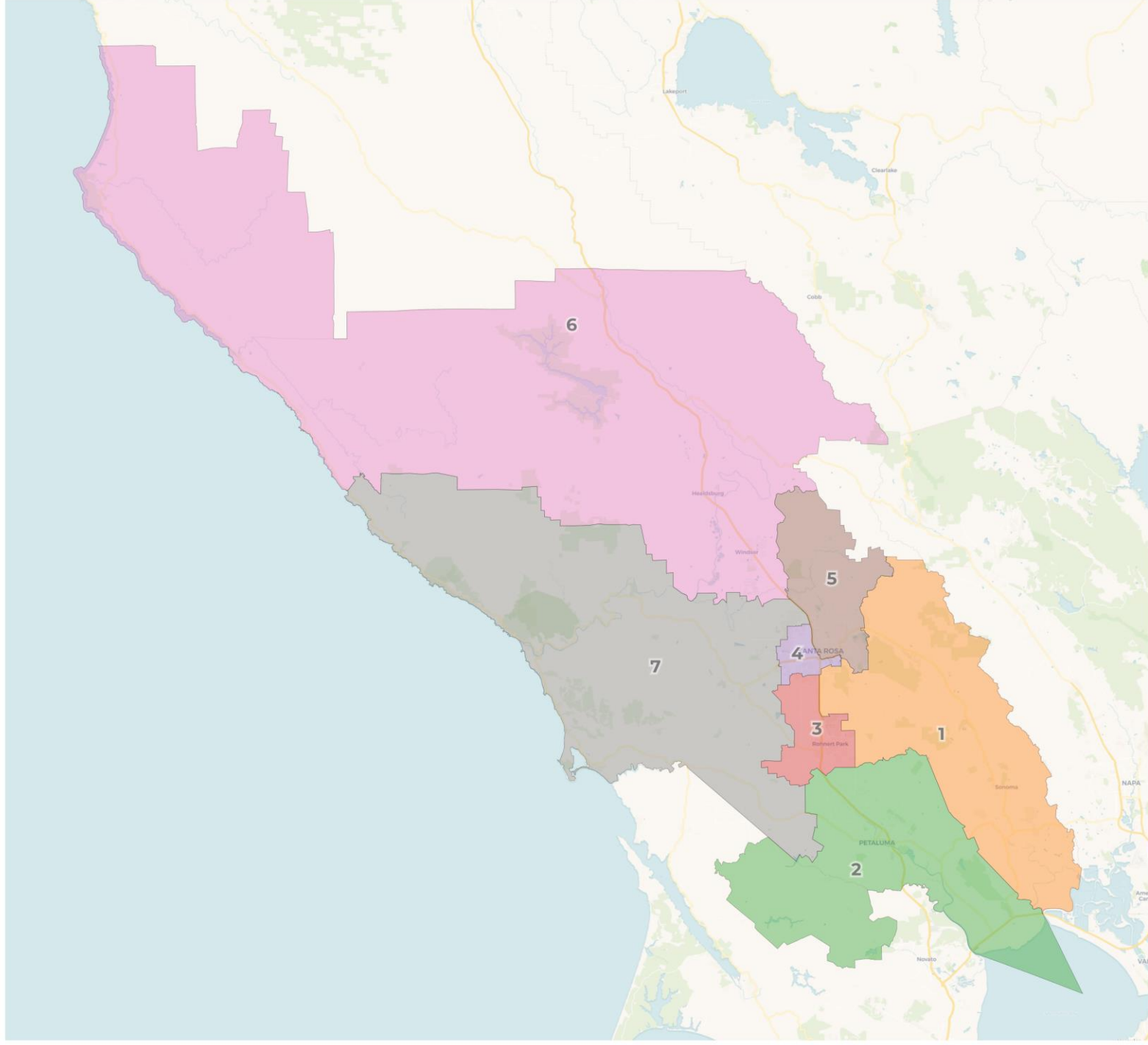






REDISTRICTING  
PARTNERS

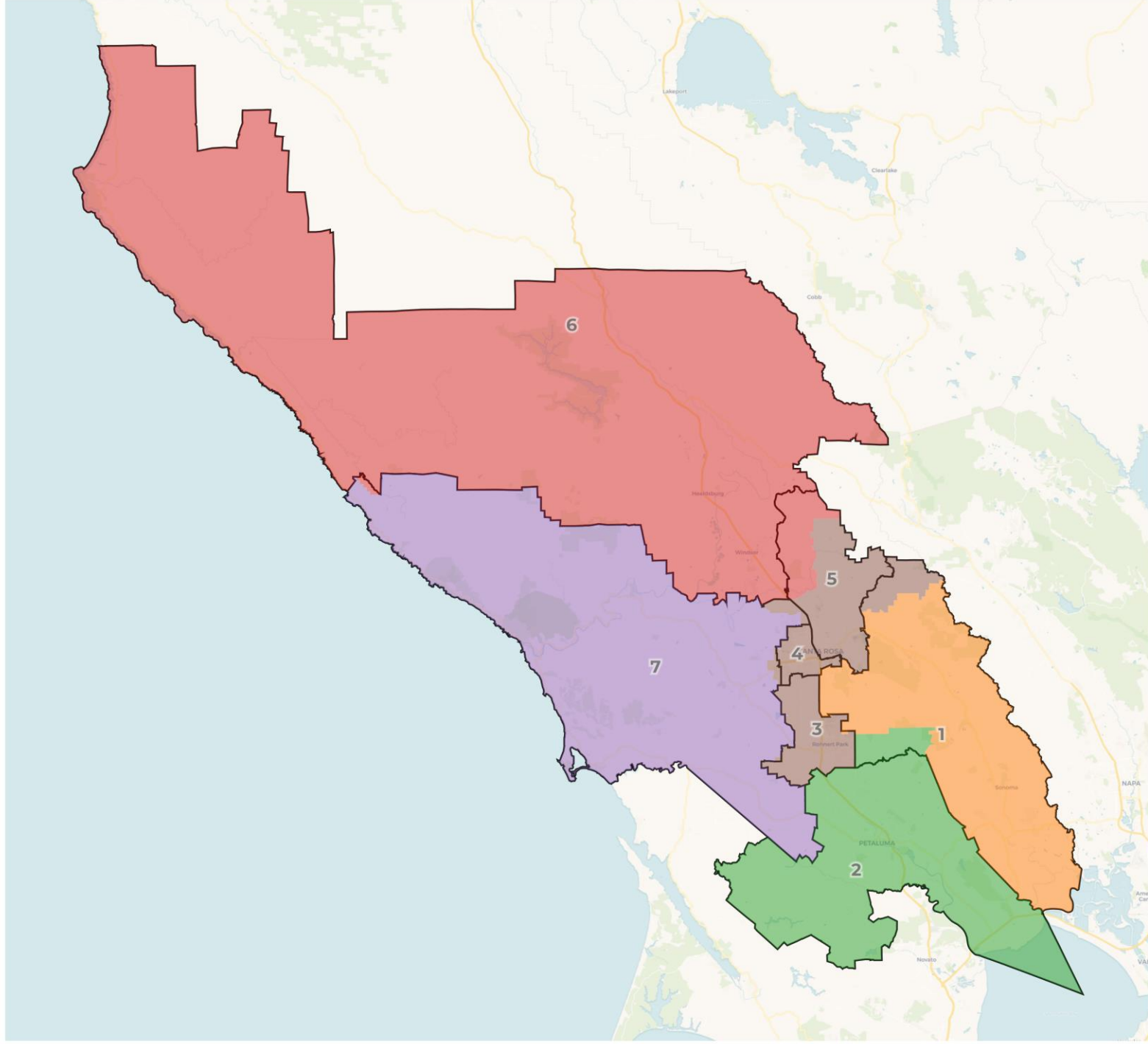
## Santa Rosa CCD Plan A





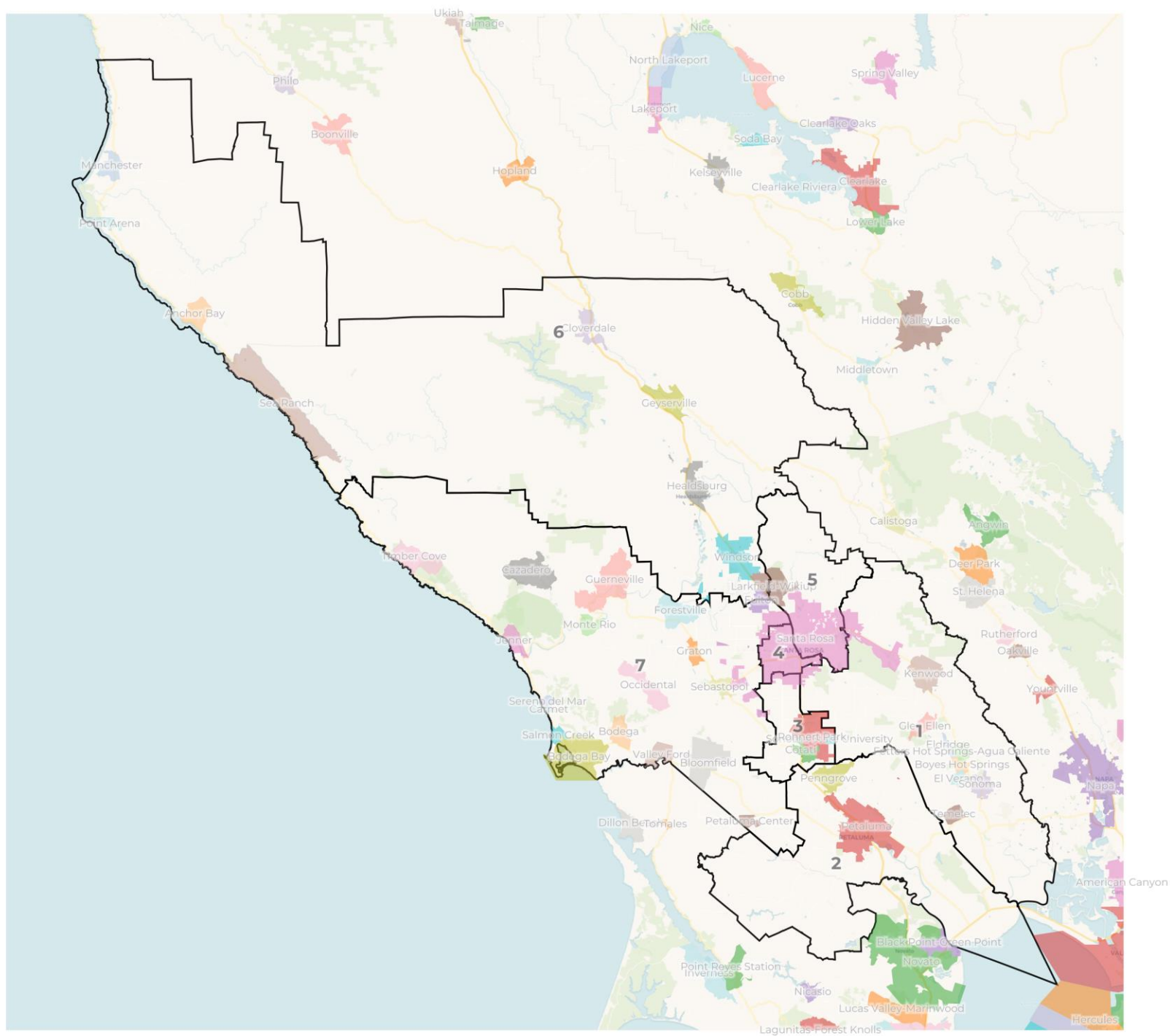


### Plan A, current lines overlay



# Santa Rosa CCD

## Plan A, city overlay

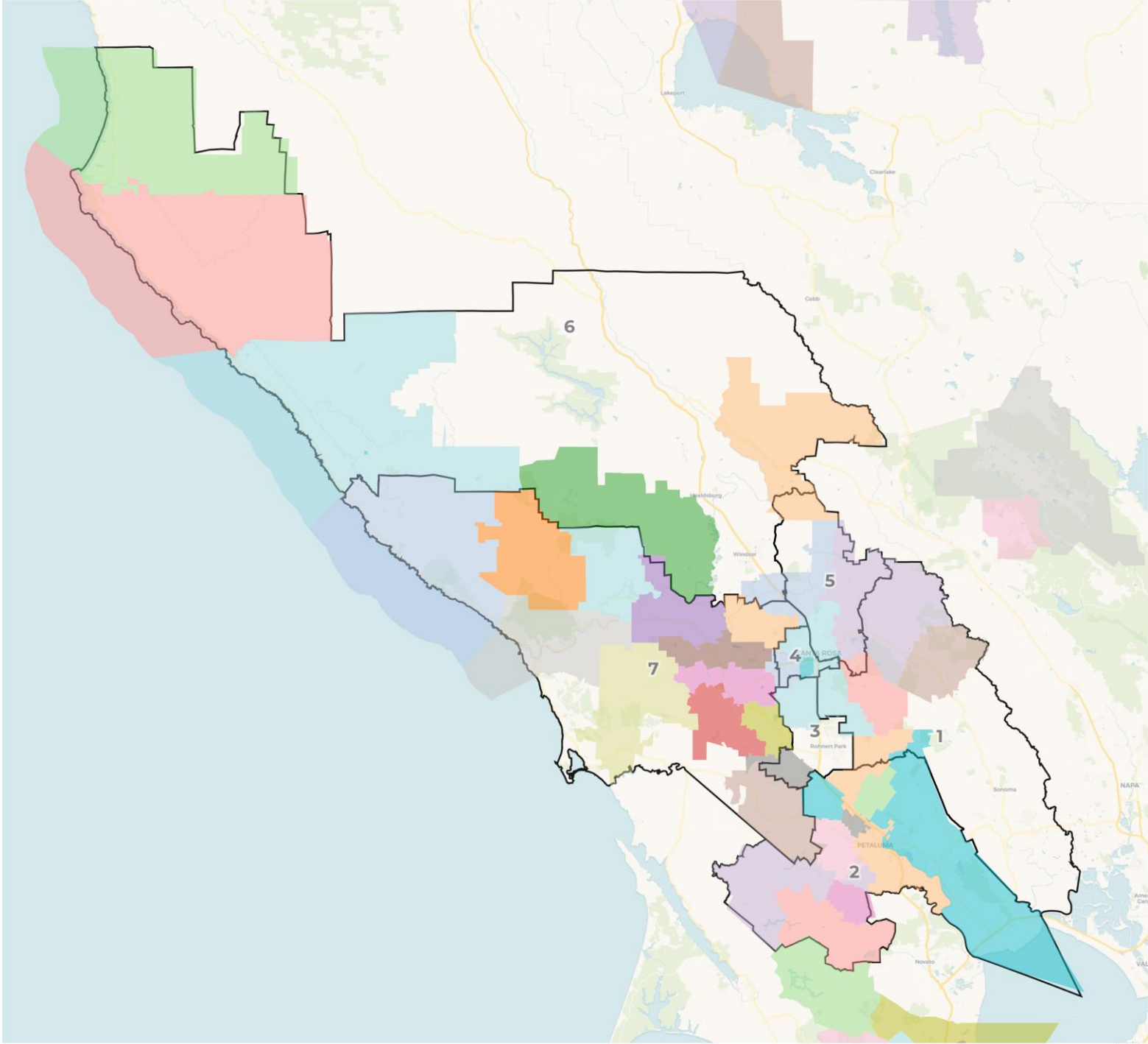




# REDISTRICTING PARTNERS

## Santa Rosa CCD

Plan A, Elementary School Overlay



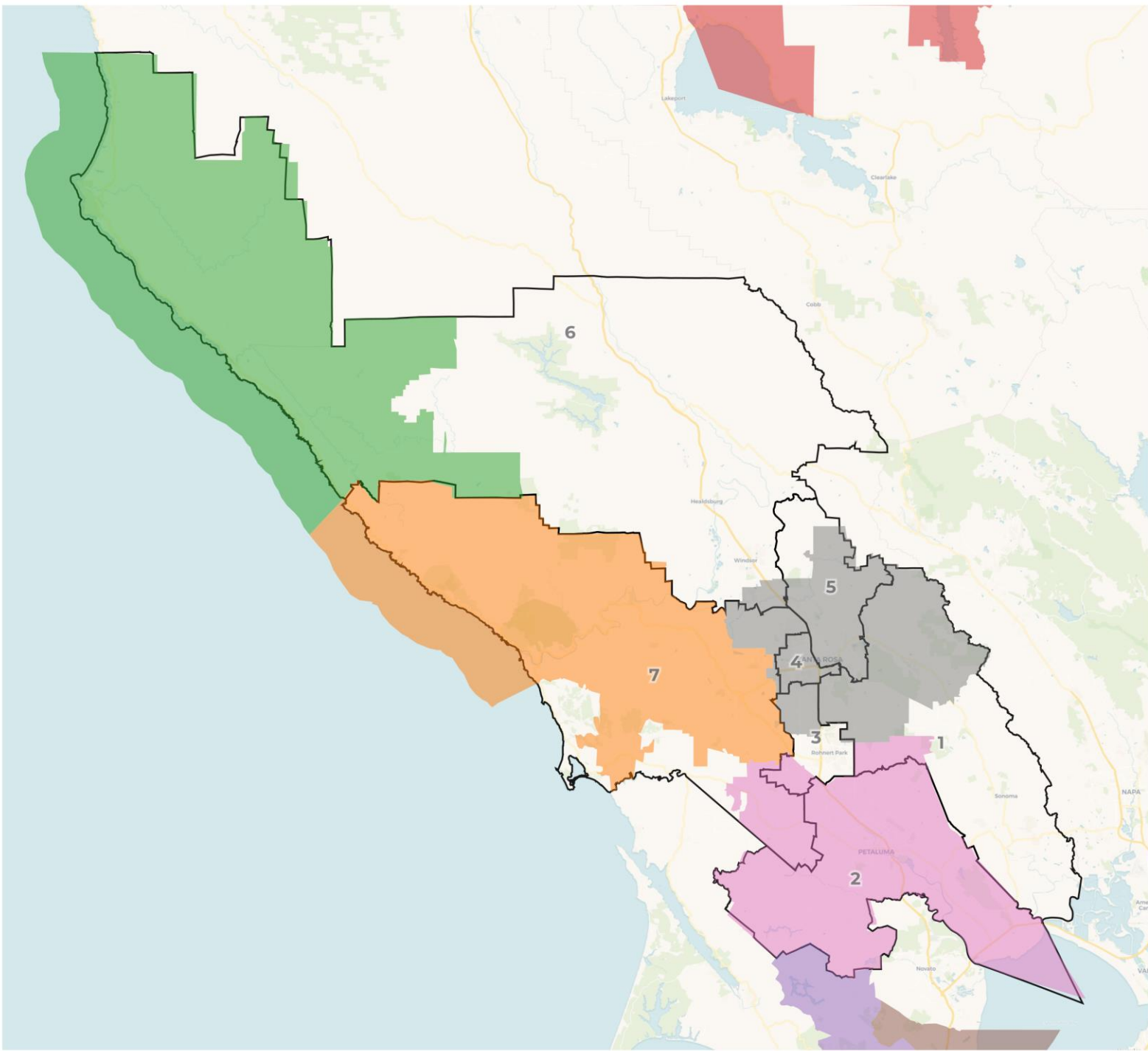




# REDISTRICTING PARTNERS

## Santa Rosa CCD

Plan A, Secondary School Overlay

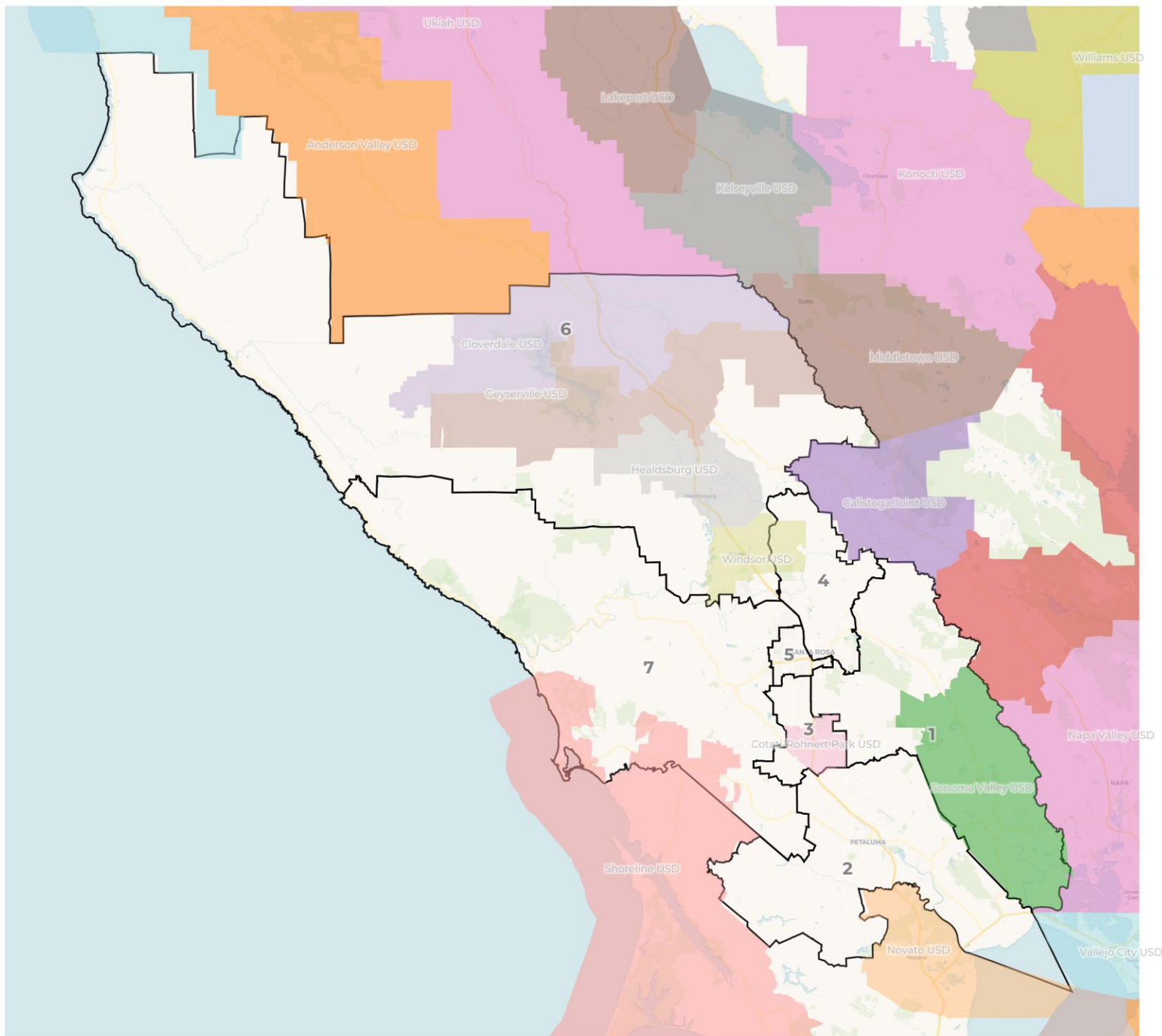




# REDISTRICTING PARTNERS

## Santa Rosa Junior College District

Plan A with USDs

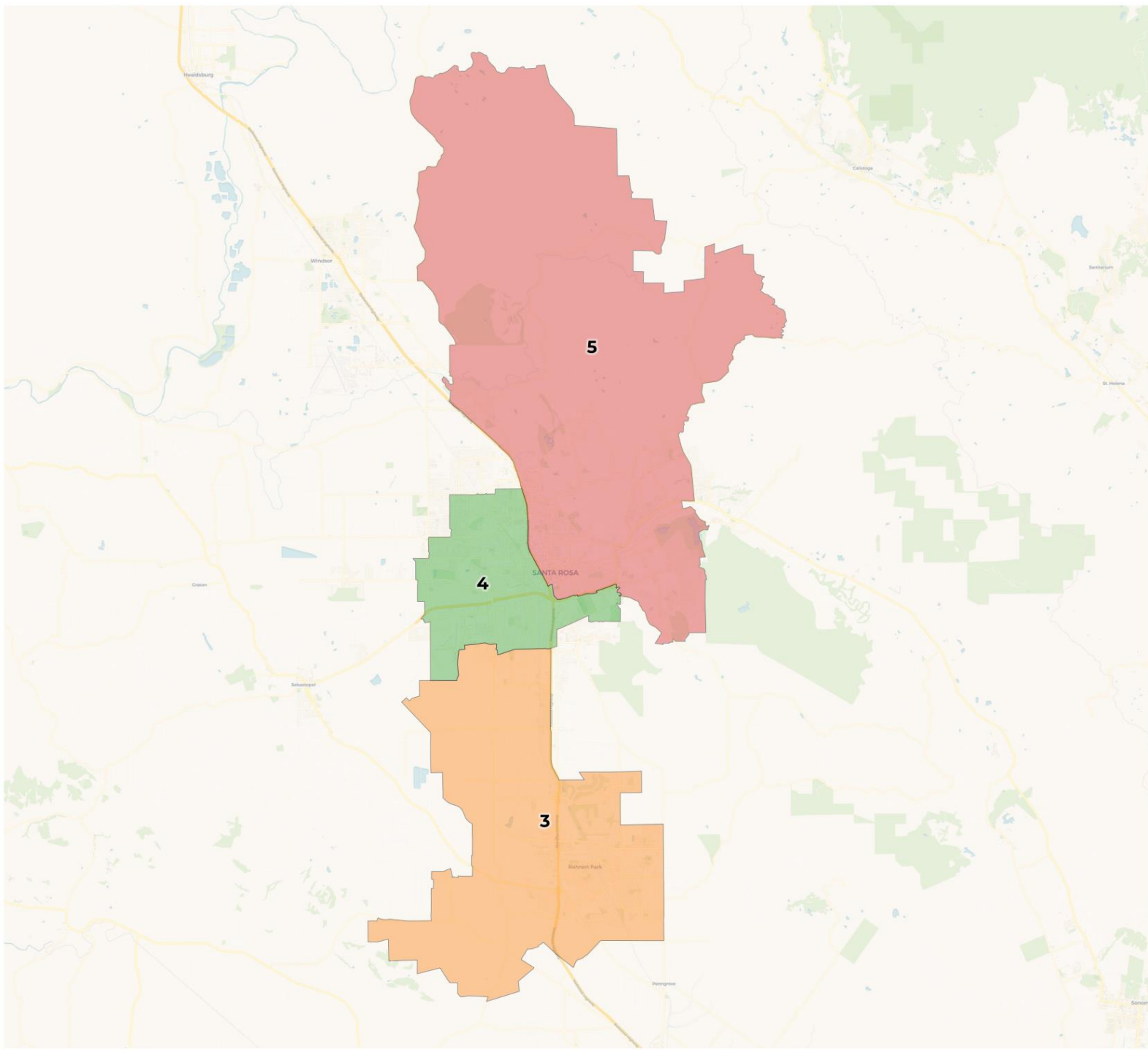




# REDISTRICTING PARTNERS

## Santa Rosa Junior College

Plan A: Areas 3, 4 and 5



## 2020 Census

	1	2	3	4	5	6	7
Population	69,455	71,971	69,646	71,334	72,837	67,920	70,940
Deviation	-1,131	1,385	-940	748	2,251	-2,666	354
Deviation %	-1.6%	2.0%	-1.3%	1.1%	3.2%	-3.8%	0.5%
Other	45,963	52,488	40,208	53,412	30,342	44,293	55,290
Other %	66.2%	72.9%	57.7%	74.9%	41.7%	65.2%	77.9%
Latino	20,240	15,577	22,232	13,635	36,373	21,809	12,706
Latino %	29.1%	21.6%	31.9%	19.1%	49.9%	32.1%	17.9%
Asian	2,626	3,045	5,732	3,100	4,329	1,349	2,107
Asian %	3.8%	4.2%	8.2%	4.3%	5.9%	2.0%	3.0%
Black	626	861	1,474	1,187	1,793	469	837
Black %	0.9%	1.2%	2.1%	1.7%	2.5%	0.7%	1.2%

## Citizen Voting Age Population (CVAP)

	1	2	3	4	5	6	7
Total CVAP	51,590	53,208	45,949	56,589	41,960	50,205	59,472
Other CVAP	42,612	44,342	33,814	47,527	27,087	38,518	51,552
Other CVAP %	82.6%	83.3%	73.6%	84.0%	64.6%	76.7%	86.7%
Latino CVAP	6,447	6,268	9,141	6,026	11,610	10,142	6,051
Latino CVAP %	12.5%	11.8%	19.9%	10.6%	27.7%	20.2%	10.2%
Asian CVAP	1,968	2,132	1,991	2,211	2,288	1,182	1,210
Asian CVAP %	3.8%	4.0%	4.3%	3.9%	5.5%	2.4%	2.0%
Black CVAP	562	466	1,004	825	975	362	659
Black CVAP %	1.1%	0.9%	2.2%	1.5%	2.3%	0.7%	1.1%



## 2020 Census

	1	2	3	4	5	6	7
Population	69,455	71,971	69,646	71,334	72,837	67,920	70,940
Deviation	-1,131	1,385	-940	748	2,251	-2,666	354
Deviation %	-1.6%	2.0%	-1.3%	1.1%	3.2%	-3.8%	0.5%
Other	45,963	52,488	40,208	53,412	30,342	44,293	55,290
Other %	66.2%	72.9%	57.7%	74.9%	41.7%	65.2%	77.9%
Latino	12,706						12,706
Latino %	18.3%	17.9%	14.5%	16.8%	14.2%	19.9%	17.9%
Asian							2,107
Asian %	3.8%	4.2%	8.2%	4.3%	5.9%	2.0%	3.0%
Black	626	861	1,474	1,187	1,793	469	837
Black %	0.9%	1.2%	2.1%	1.7%	2.5%	0.7%	1.2%

Total Deviation of 7%

## Citizen Voting Age Population (CVAP)

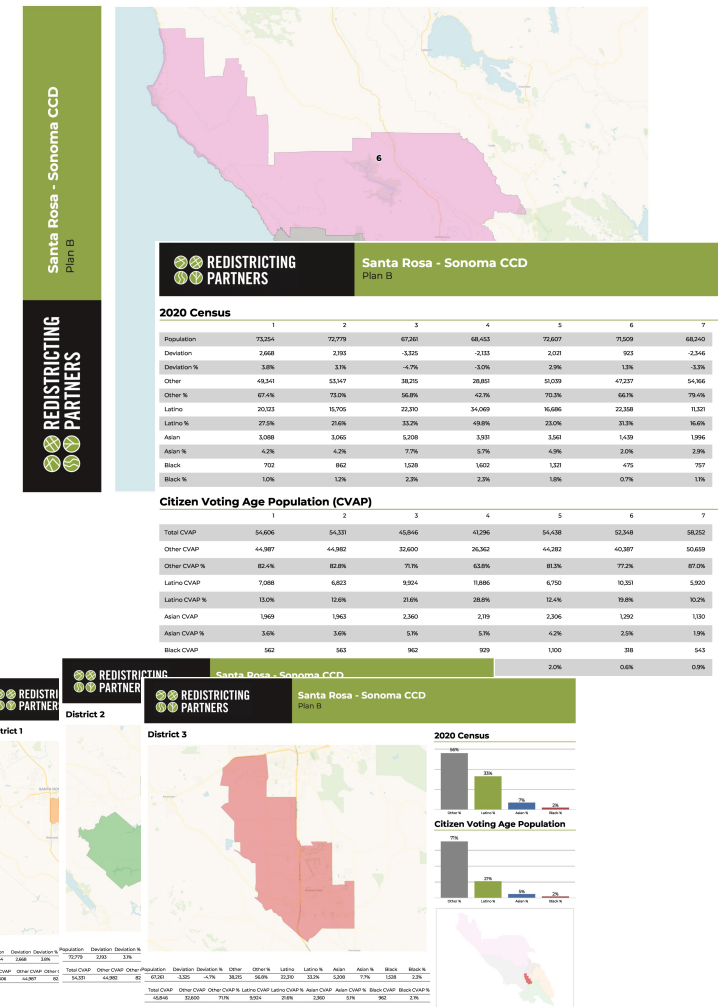
	1	2	3	4	5	6	7
Total CVAP	51,590	53,208	45,949	56,589	41,960	50,205	59,472
Other CVAP	42,612	44,342	33,814	47,527	27,087	38,518	51,552
Other CVAP %	82.6%	83.3%	73.6%	84.0%	64.6%	76.7%	86.7%
Latino CVAP	6,447	6,268	9,141	6,026	11,610	10,142	6,051
Latino CVAP %	12.5%	11.8%	19.9%	10.6%	27.7%	20.2%	10.2%
Asian CVAP	1,968	2,132	1,991	2,211	2,288	1,182	1,210
Asian CVAP %	3.8%	4.0%	4.3%	3.9%	5.5%	2.4%	2.0%
Black CVAP	562	466	1,004	825	975	362	659
Black CVAP %	1.1%	0.9%	2.2%	1.5%	2.3%	0.7%	1.1%

# Draft Map Plans

Each draft plan is provided with both a PDF and Online Web-based format

- Draft Map B**

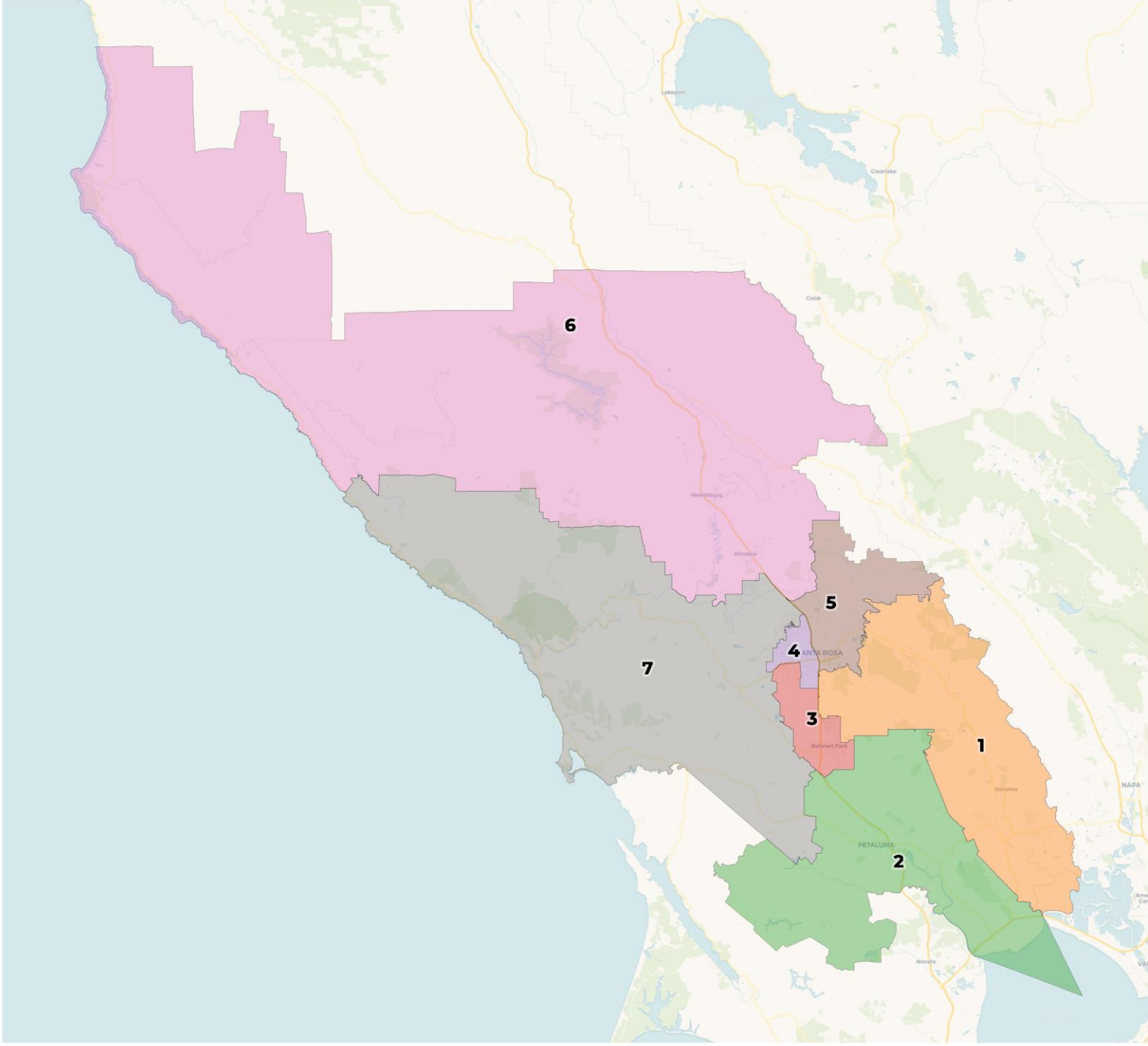
- Districts 1, 2, 6 and 7 are mostly unchanged, balancing only for population.
- Districts 3, 4 and 5 are now individual districts, keeping the neighborhood of Roseland whole
- Used Highways 12 and 101 as dividers, but to keep Roseland whole, 12 was crossed.
- Used school districts as a guide when possible





**REDISTRICTING  
PARTNERS**

## Santa Rosa - Sonoma CCD Plan B

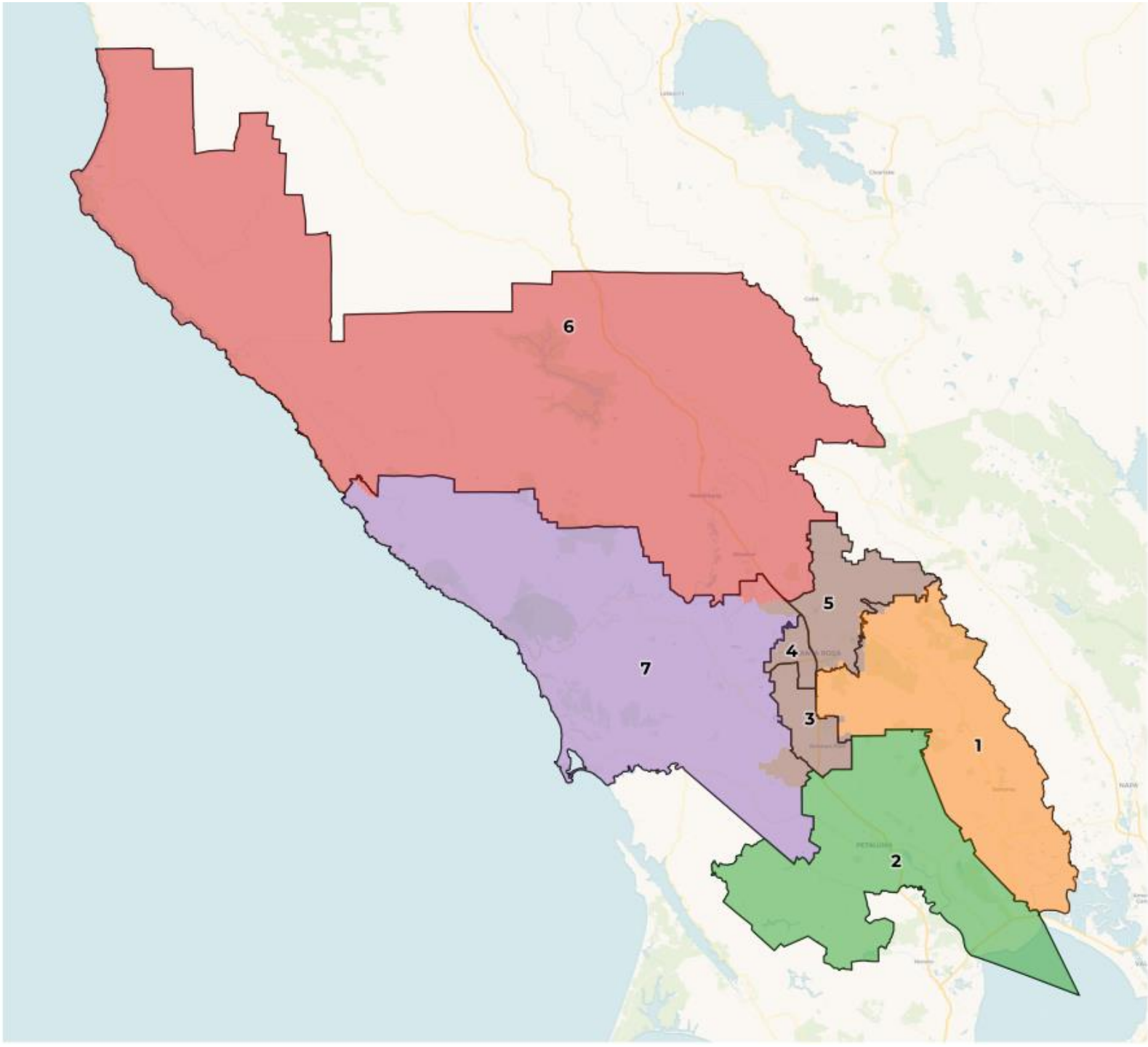




# REDISTRICTING PARTNERS

## Santa Rosa CCD

Draft Plan B with current lines  
overlay

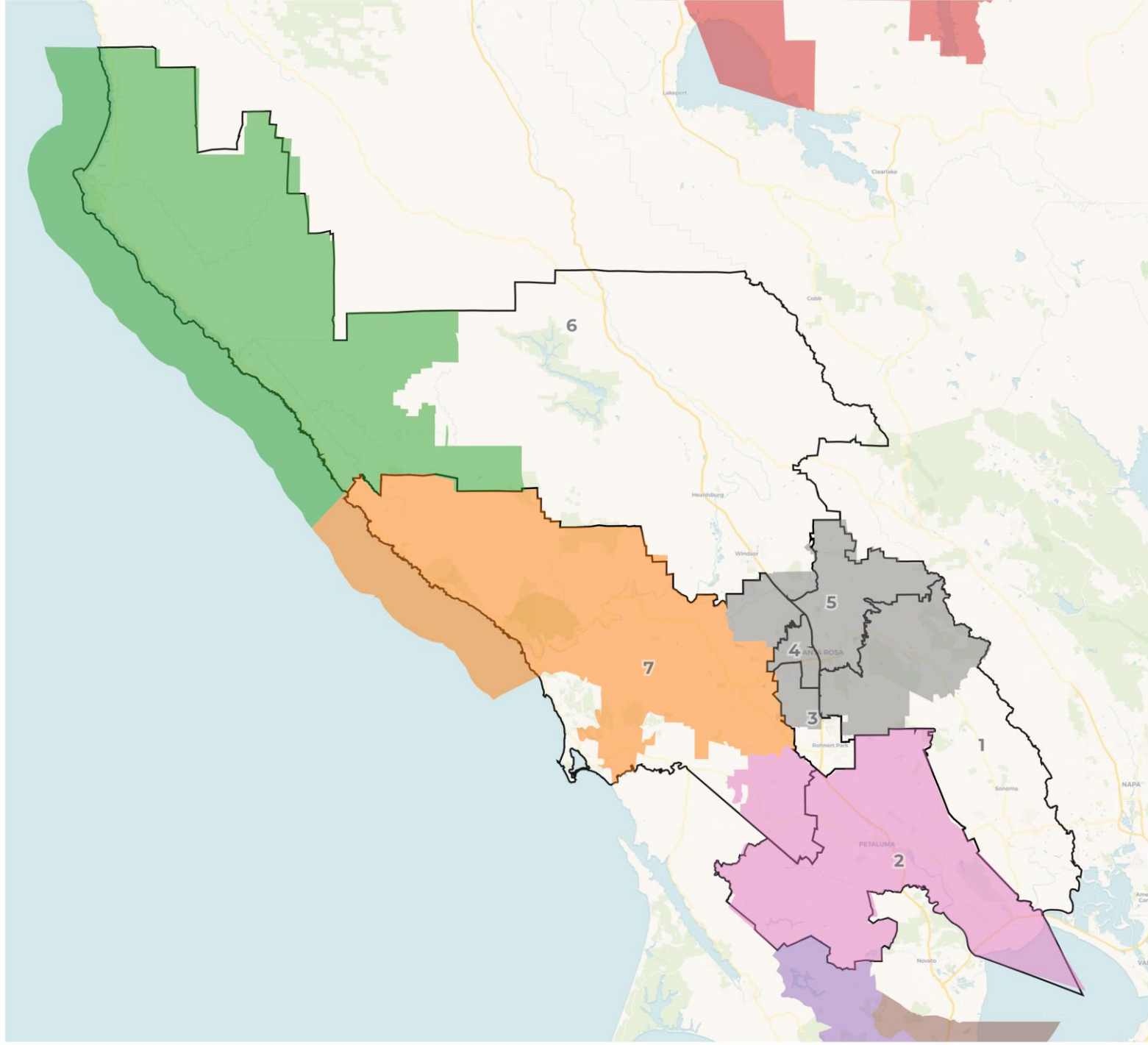




## Plan B with cities



## Plan B, Secondary School Overlay

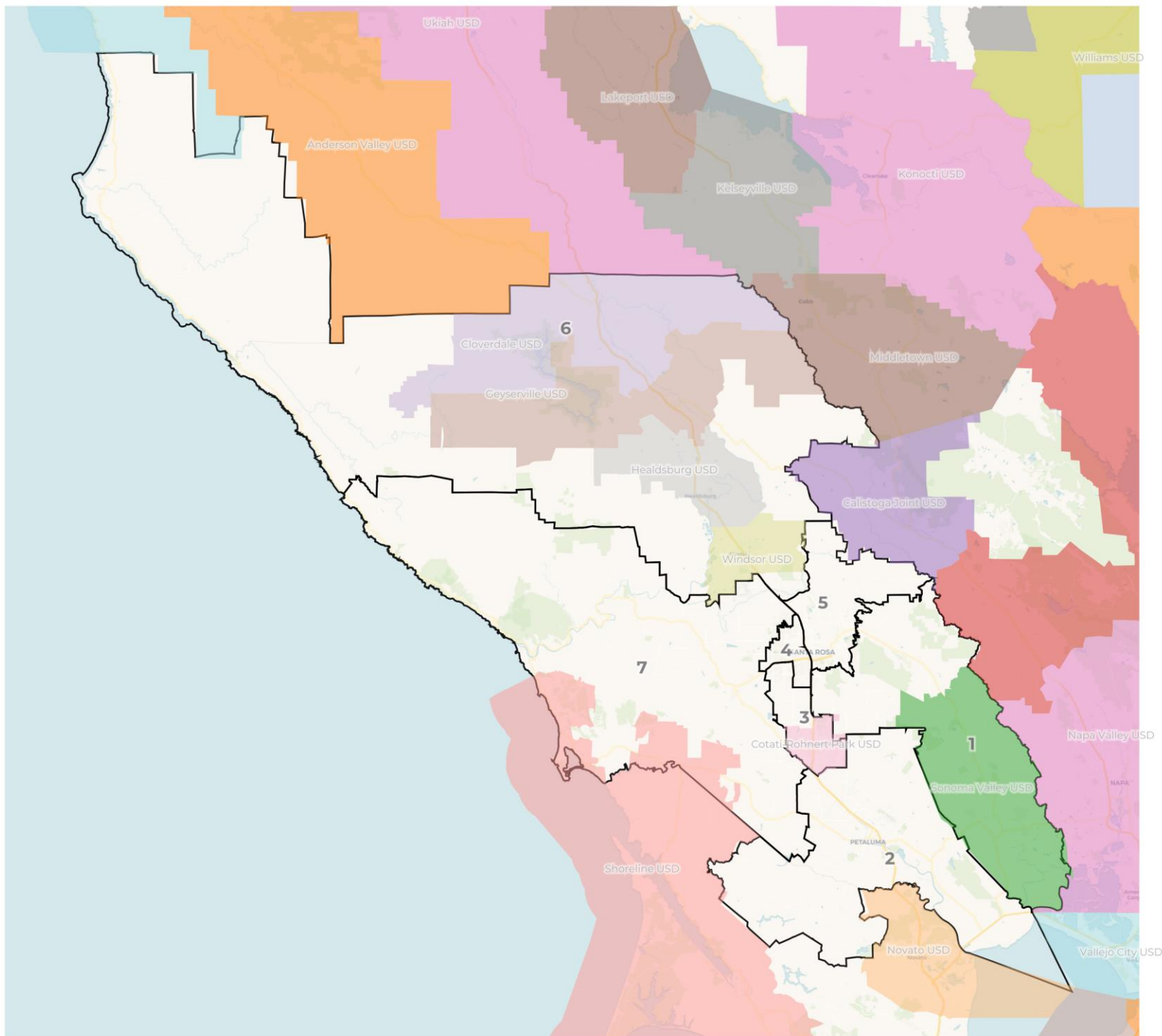




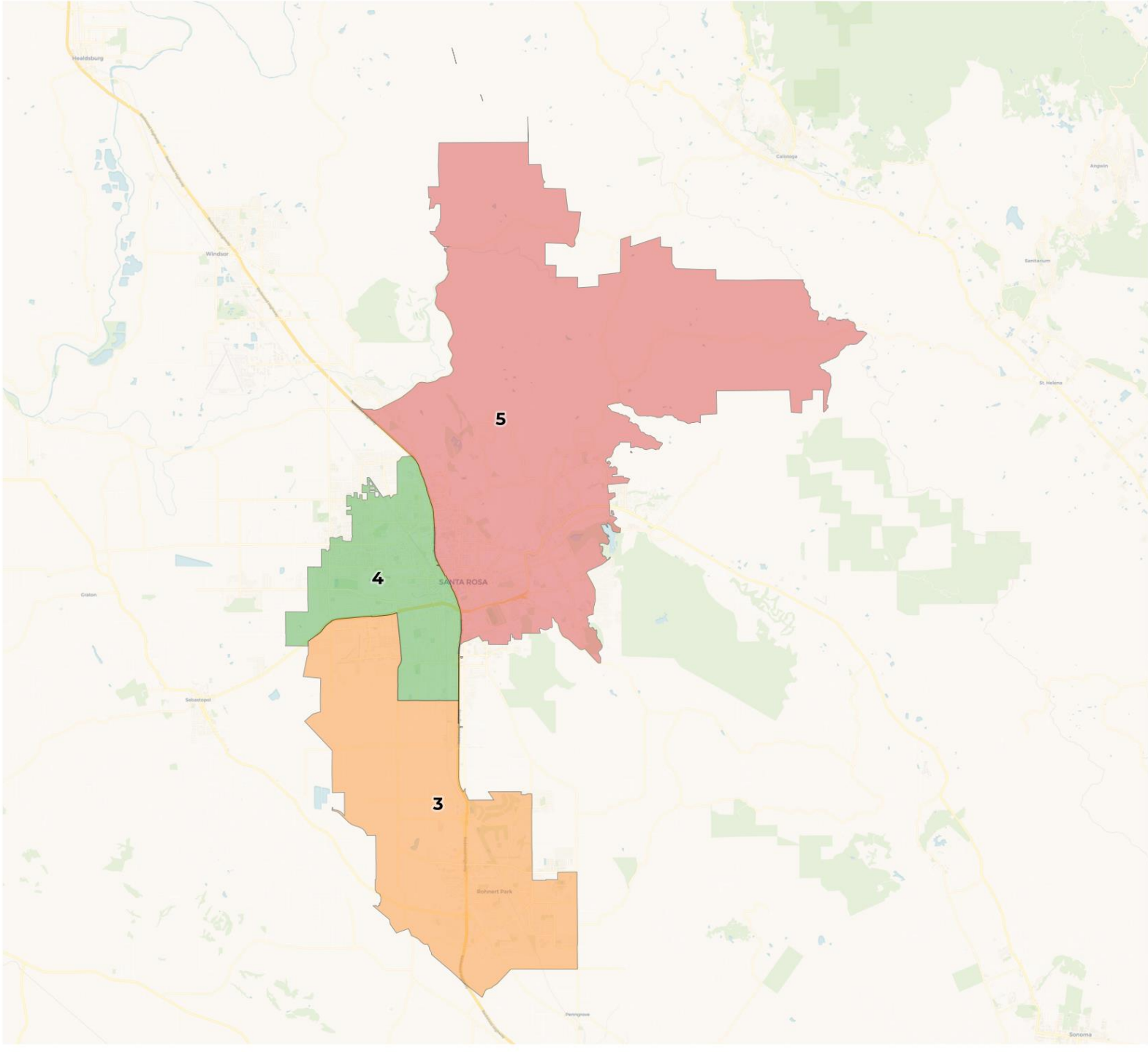
# REDISTRICTING PARTNERS

## Santa Rosa Junior College District

Plan B with USDs







## 2020 Census

	1	2	3	4	5	6	7
Population	73,254	72,779	67,261	68,453	72,607	71,509	68,240
Deviation	2,668	2,193	-3,325	-2,133	2,021	923	-2,346
Deviation %	3.8%	3.1%	-4.7%	-3.0%	2.9%	1.3%	-3.3%
Other	49,341	53,147	38,215	28,851	51,039	47,237	54,166
Other %	67.4%	73.0%	56.8%	42.1%	70.3%	66.1%	79.4%
Latino	20,123	15,705	22,310	34,069	16,686	22,358	11,321
Latino %	27.5%	21.6%	33.2%	49.8%	23.0%	31.3%	16.6%
Asian	3,088	3,065	5,208	3,931	3,561	1,439	1,996
Asian %	4.2%	4.2%	7.7%	5.7%	4.9%	2.0%	2.9%
Black	702	862	1,528	1,602	1,321	475	757
Black %	1.0%	1.2%	2.3%	2.3%	1.8%	0.7%	1.1%

## Citizen Voting Age Population (CVAP)

	1	2	3	4	5	6	7
Total CVAP	54,606	54,331	45,846	41,296	54,438	52,348	58,252
Other CVAP	44,987	44,982	32,600	26,362	44,282	40,387	50,659
Other CVAP %	82.4%	82.8%	71.1%	63.8%	81.3%	77.2%	87.0%
Latino CVAP	7,088	6,823	9,924	11,886	6,750	10,351	5,920
Latino CVAP %	13.0%	12.6%	21.6%	28.8%	12.4%	19.8%	10.2%
Asian CVAP	1,969	1,963	2,360	2,119	2,306	1,292	1,130
Asian CVAP %	3.6%	3.6%	5.1%	5.1%	4.2%	2.5%	1.9%
Black CVAP	562	563	962	929	1,100	318	543
Black CVAP %	1.0%	1.0%	2.1%	2.2%	2.0%	0.6%	0.9%

## 2020 Census

	1	2	3	4	5	6	7
Population	73,254	72,779	67,261	68,453	72,607	71,509	68,240
Deviation	2,668	2,193	-3,325	-2,133	2,021	923	-2,346
Deviation %	3.8%	3.1%	-4.7%	-3.0%	2.9%	1.3%	-3.3%
Other	49,341	53,147	38,215	28,851	51,039	47,237	54,166
Other %	67.4%	73.0%	56.8%	42.1%	70.3%	66.1%	79.4%
Latino							11,321
Latino %							16.6%
Asian							1,996
Asian %	4.2%	4.2%	7.7%	5.7%	4.9%	2.0%	2.9%
Black	702	862	1,528	1,602	1,321	475	757
Black %	1.0%	1.2%	2.3%	2.3%	1.8%	0.7%	1.1%

Total Deviation of 8.5%

## Citizen Voting Age Population (CVAP)

	1	2	3	4	5	6	7
Total CVAP	54,606	54,331	45,846	41,296	54,438	52,348	58,252
Other CVAP	44,987	44,982	32,600	26,362	44,282	40,387	50,659
Other CVAP %	82.4%	82.8%	71.1%	63.8%	81.3%	77.2%	87.0%
Latino CVAP	7,088	6,823	9,924	11,886	6,750	10,351	5,920
Latino CVAP %	13.0%	12.6%	21.6%	28.8%	12.4%	19.8%	10.2%
Asian CVAP	1,969	1,963	2,360	2,119	2,306	1,292	1,130
Asian CVAP %	3.6%	3.6%	5.1%	5.1%	4.2%	2.5%	1.9%
Black CVAP	562	563	962	929	1,100	318	543
Black CVAP %	1.0%	1.0%	2.1%	2.2%	2.0%	0.6%	0.9%

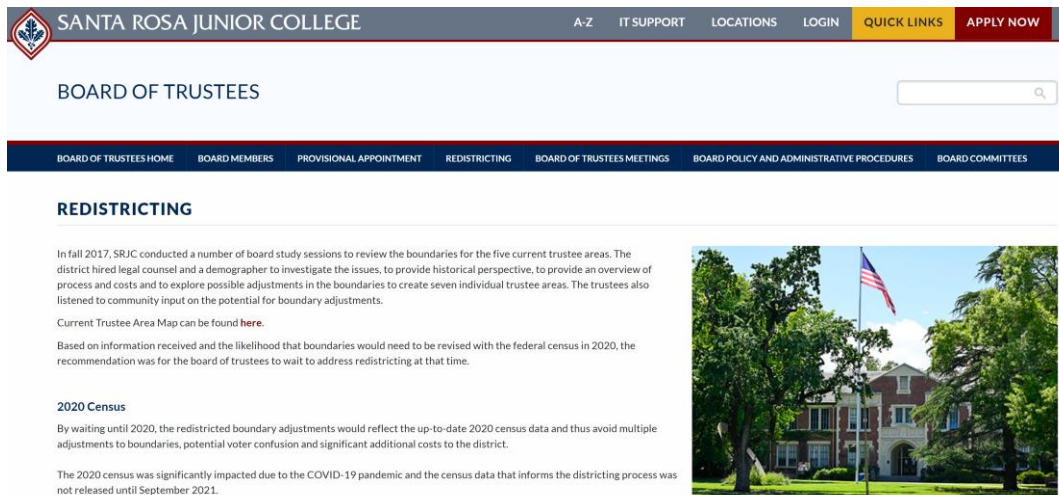
# Districting Process

## Timeline and Hearing Themes

November 9, 2021	Process, Fundamentals, and Timeline
November 30, 2021	Data and Communities of Interest
December 14, 2021	Draft Maps Hearing, Updated Data, Boundaries and COI
<b>January 11, 2022</b>	<b>2<sup>nd</sup> Map Hearing: Presentation of draft maps with input from the public and Board</b>
February 8, 2022	Final Map Adoption Hearing: Approval of final map

## How the public can stay engaged

<https://trustees.santarosa.edu/redistricting>



The screenshot shows the website for the Santa Rosa Junior College Board of Trustees. The header includes the college's name and a navigation bar with links for A-Z, IT Support, Locations, Login, Quick Links, and Apply Now. Below the header is a search bar and a navigation menu with links to Board of Trustees Home, Board Members, Provisional Appointment, Redistricting, Board of Trustees Meetings, Board Policy and Administrative Procedures, and Board Committees. The main content area is titled "REDISTRICTING" and contains text about the 2017 board study sessions, the current Trustee Area Map, and the 2020 Census. A photograph of the college building is also visible.

**SANTA ROSA JUNIOR COLLEGE** A-Z IT SUPPORT LOCATIONS LOGIN QUICK LINKS APPLY NOW

BOARD OF TRUSTEES

BOARD OF TRUSTEES HOME BOARD MEMBERS PROVISIONAL APPOINTMENT REDISTRICTING BOARD OF TRUSTEES MEETINGS BOARD POLICY AND ADMINISTRATIVE PROCEDURES BOARD COMMITTEES

### REDISTRICTING

In fall 2017, SRJC conducted a number of board study sessions to review the boundaries for the five current trustee areas. The district hired legal counsel and a demographer to investigate the issues, to provide historical perspective, to provide an overview of process and costs and to explore possible adjustments in the boundaries to create seven individual trustee areas. The trustees also listened to community input on the potential for boundary adjustments.


Current Trustee Area Map can be found [here](#).

Based on information received and the likelihood that boundaries would need to be revised with the federal census in 2020, the recommendation was for the board of trustees to wait to address redistricting at that time.

#### 2020 Census

By waiting until 2020, the redistricted boundary adjustments would reflect the up-to-date 2020 census data and thus avoid multiple adjustments to boundaries, potential voter confusion and significant additional costs to the district.

The 2020 census was significantly impacted due to the COVID-19 pandemic and the census data that informs the districting process was not released until September 2021.



Submit comments or feedback on your Community of Interest to:

[redistricting@santarosa.edu](mailto:redistricting@santarosa.edu)

## Submit Community of Interest Feedback

Submit comments or feedback on your Community of Interest to:

[redistricting@santarosa.edu](mailto:redistricting@santarosa.edu)



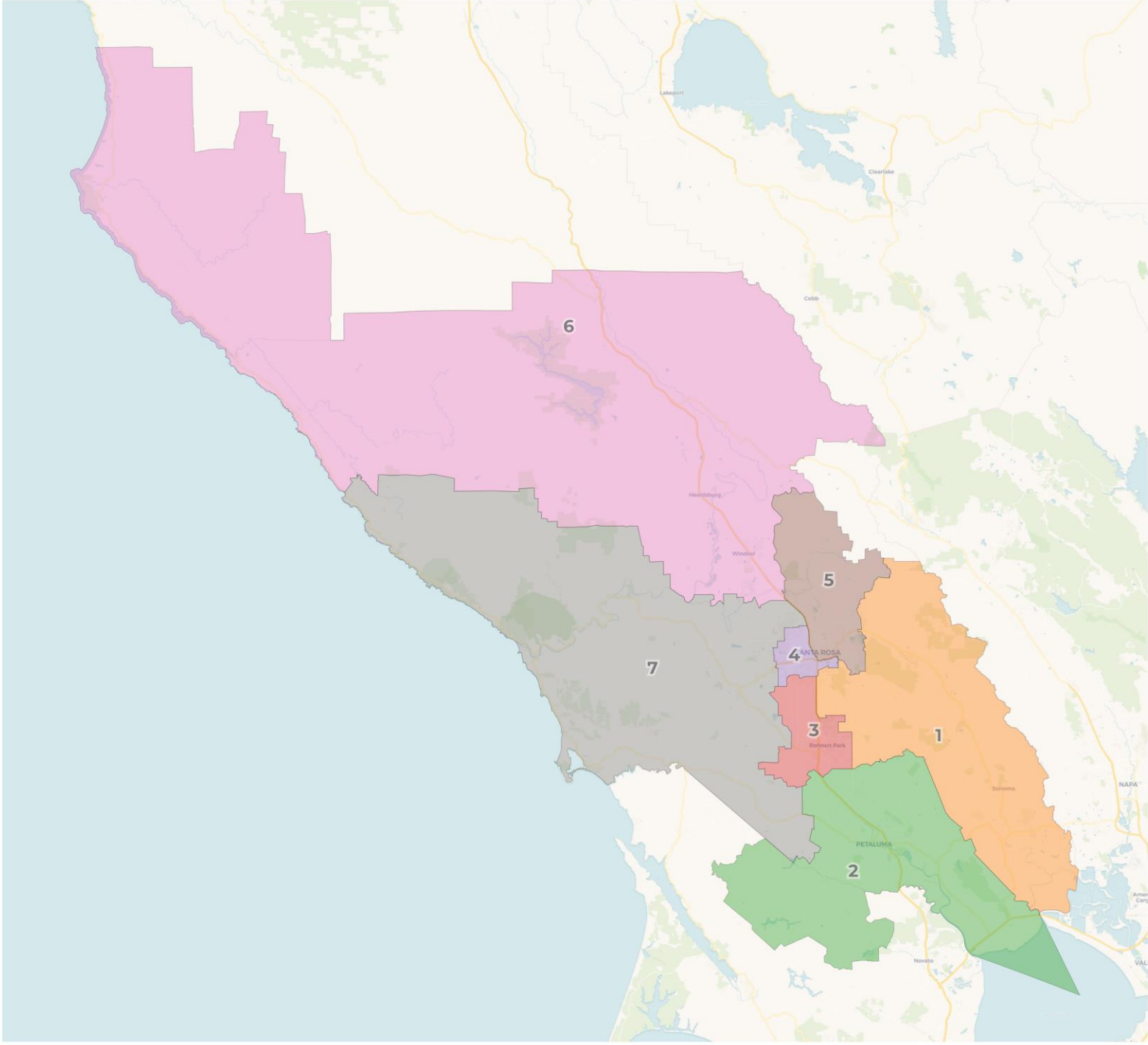
**REDISTRICTING  
PARTNERS**





REDISTRICTING  
PARTNERS

## Santa Rosa CCD Plan A



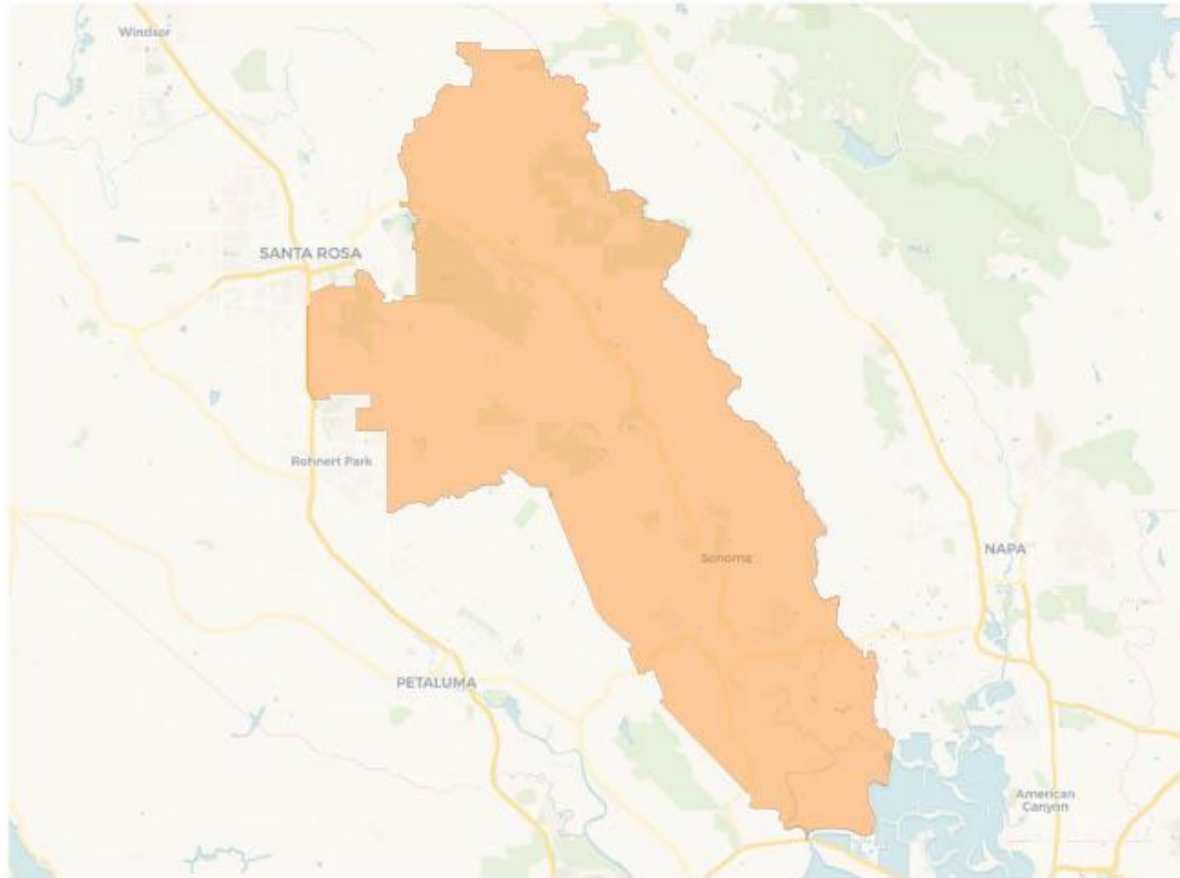
## 2020 Census

	1	2	3	4	5	6	7
Population	69,455	71,971	69,646	71,334	72,837	67,920	70,940
Deviation	-1,131	1,385	-940	748	2,251	-2,666	354
Deviation %	-1.6%	2.0%	-1.3%	1.1%	3.2%	-3.8%	0.5%
Other	45,963	52,488	40,208	53,412	30,342	44,293	55,290
Other %	66.2%	72.9%	57.7%	74.9%	41.7%	65.2%	77.9%
Latino	20,240	15,577	22,232	13,635	36,373	21,809	12,706
Latino %	29.1%	21.6%	31.9%	19.1%	49.9%	32.1%	17.9%
Asian	2,626	3,045	5,732	3,100	4,329	1,349	2,107
Asian %	3.8%	4.2%	8.2%	4.3%	5.9%	2.0%	3.0%
Black	626	861	1,474	1,187	1,793	469	837
Black %	0.9%	1.2%	2.1%	1.7%	2.5%	0.7%	1.2%

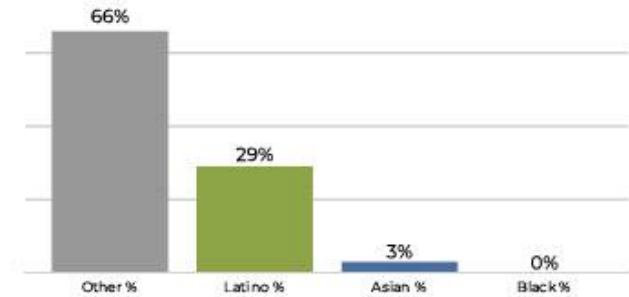
## Citizen Voting Age Population (CVAP)

	1	2	3	4	5	6	7
Total CVAP	51,590	53,208	45,949	56,589	41,960	50,205	59,472
Other CVAP	42,612	44,342	33,814	47,527	27,087	38,518	51,552
Other CVAP %	82.6%	83.3%	73.6%	84.0%	64.6%	76.7%	86.7%
Latino CVAP	6,447	6,268	9,141	6,026	11,610	10,142	6,051
Latino CVAP %	12.5%	11.8%	19.9%	10.6%	27.7%	20.2%	10.2%
Asian CVAP	1,968	2,132	1,991	2,211	2,288	1,182	1,210
Asian CVAP %	3.8%	4.0%	4.3%	3.9%	5.5%	2.4%	2.0%
Black CVAP	562	466	1,004	825	975	362	659
Black CVAP %	1.1%	0.9%	2.2%	1.5%	2.3%	0.7%	1.1%

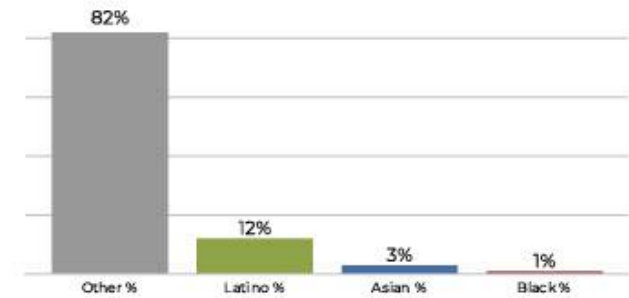
## District 1



## 2020 Census

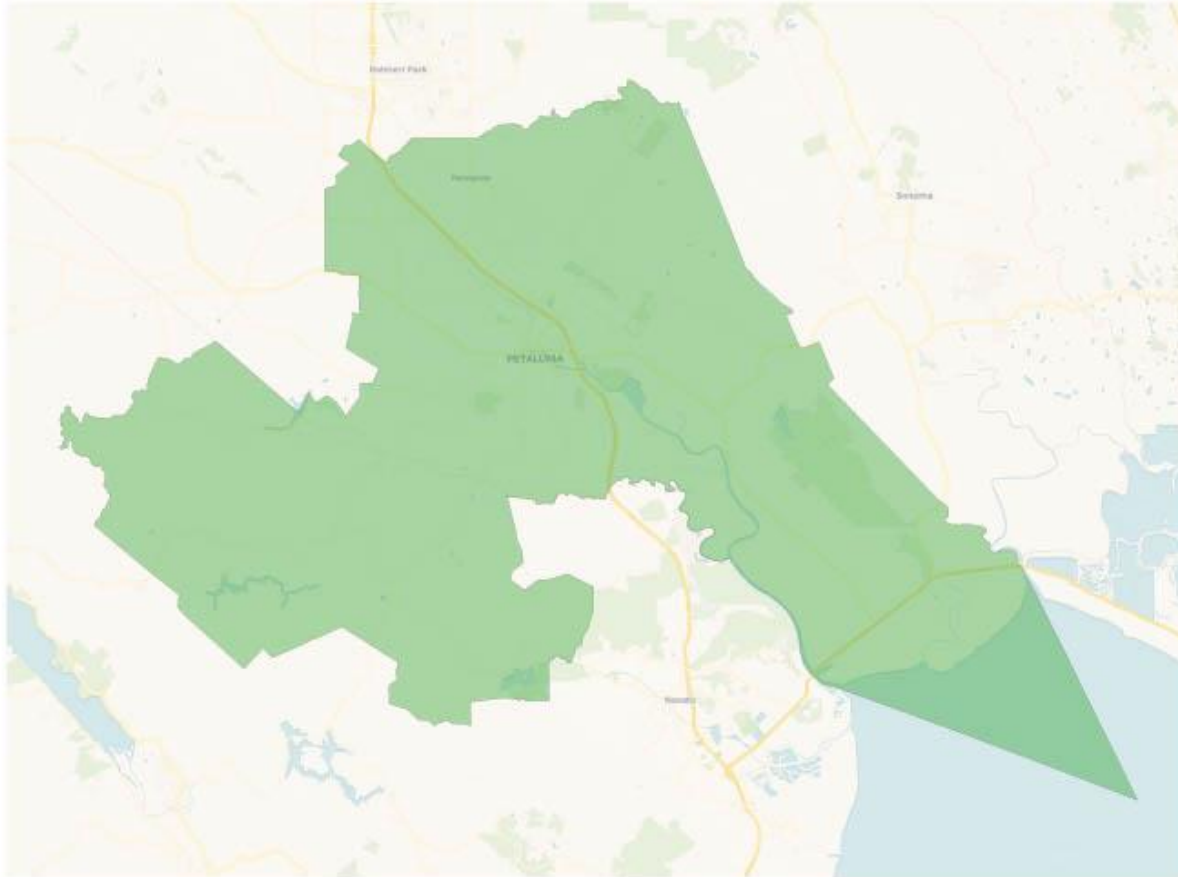


## Citizen Voting Age Population

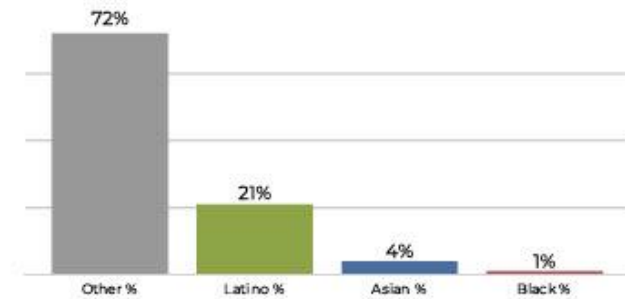


Population	Deviation	Deviation %	Other	Other %	Latino	Latino %	Asian	Asian %	Black	Black %
69,455	-1,131	-1.6%	45,963	66.2%	20,240	29.1%	2,626	3.8%	626	0.9%
Total CVAP	Other CVAP	Other CVAP %	Latino CVAP	Latino CVAP %	Asian CVAP	Asian CVAP %	Black CVAP	Black CVAP %		
51,590	42,612	82.6%	6,447	12.5%	1,968	3.8%	562	1.1%		

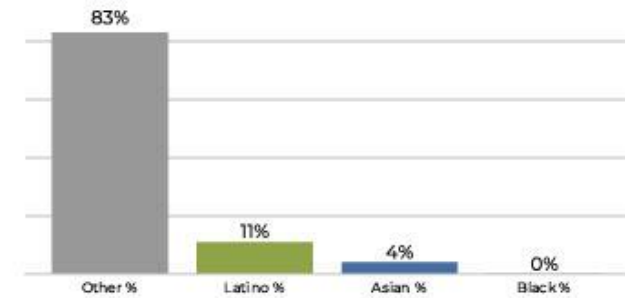
## District 2



## 2020 Census



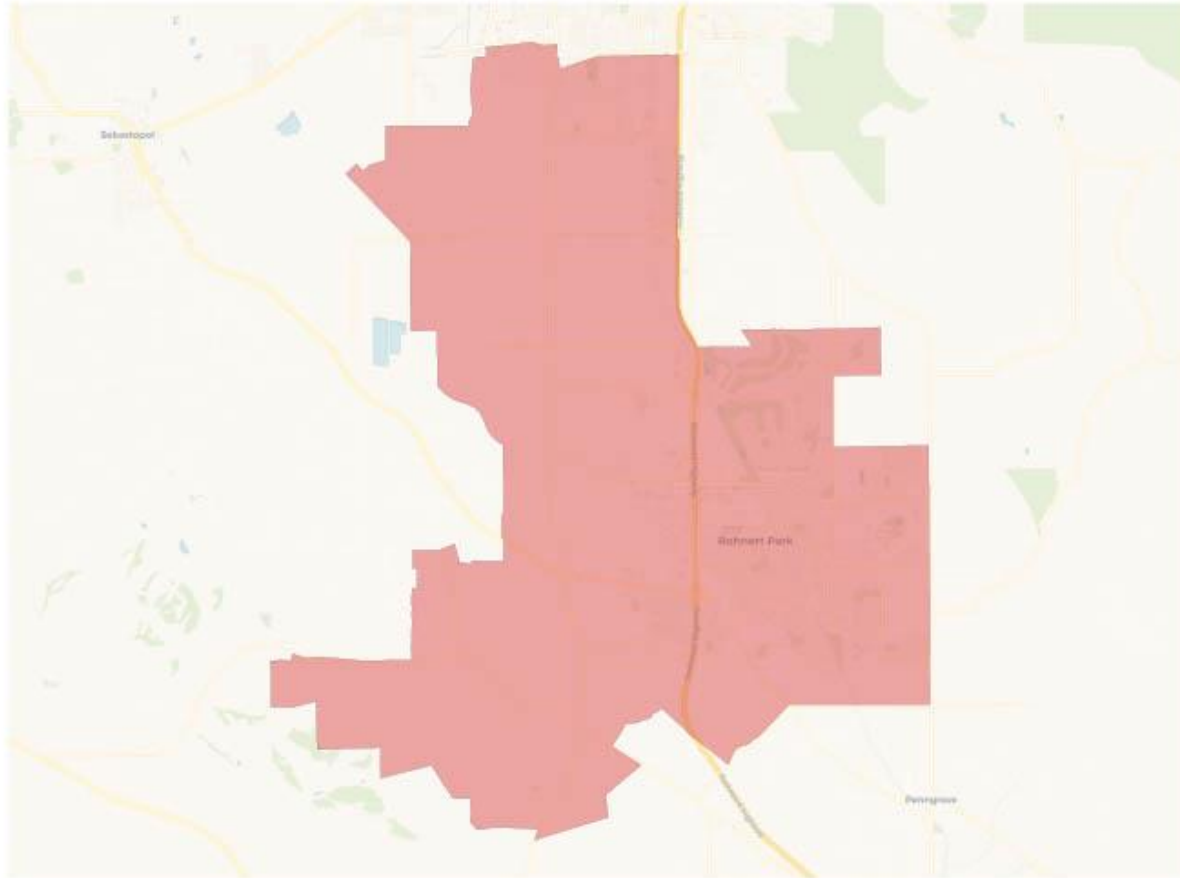
## Citizen Voting Age Population



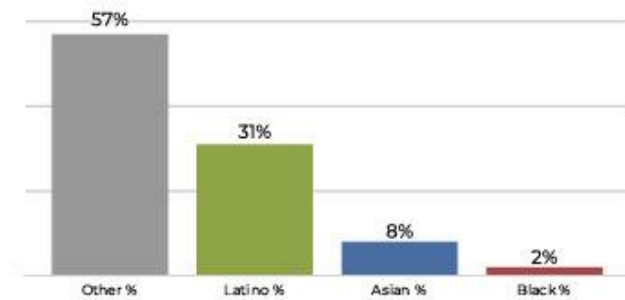
Population	Deviation	Deviation %	Other	Other %	Latino	Latino %	Asian	Asian %	Black	Black %
71,971	1,385	2.0%	52,488	72.9%	15,577	21.6%	3,045	4.2%	861	1.2%
Total CVAP	Other CVAP	Other CVAP %	Latino CVAP	Latino CVAP %	Asian CVAP	Asian CVAP %	Black CVAP	Black CVAP %		
53,208	44,342	83.3%	6,268	11.8%	2,132	4.0%	466	0.9%		



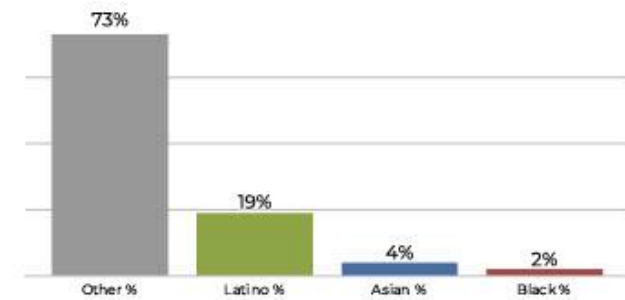
## District 3



## 2020 Census

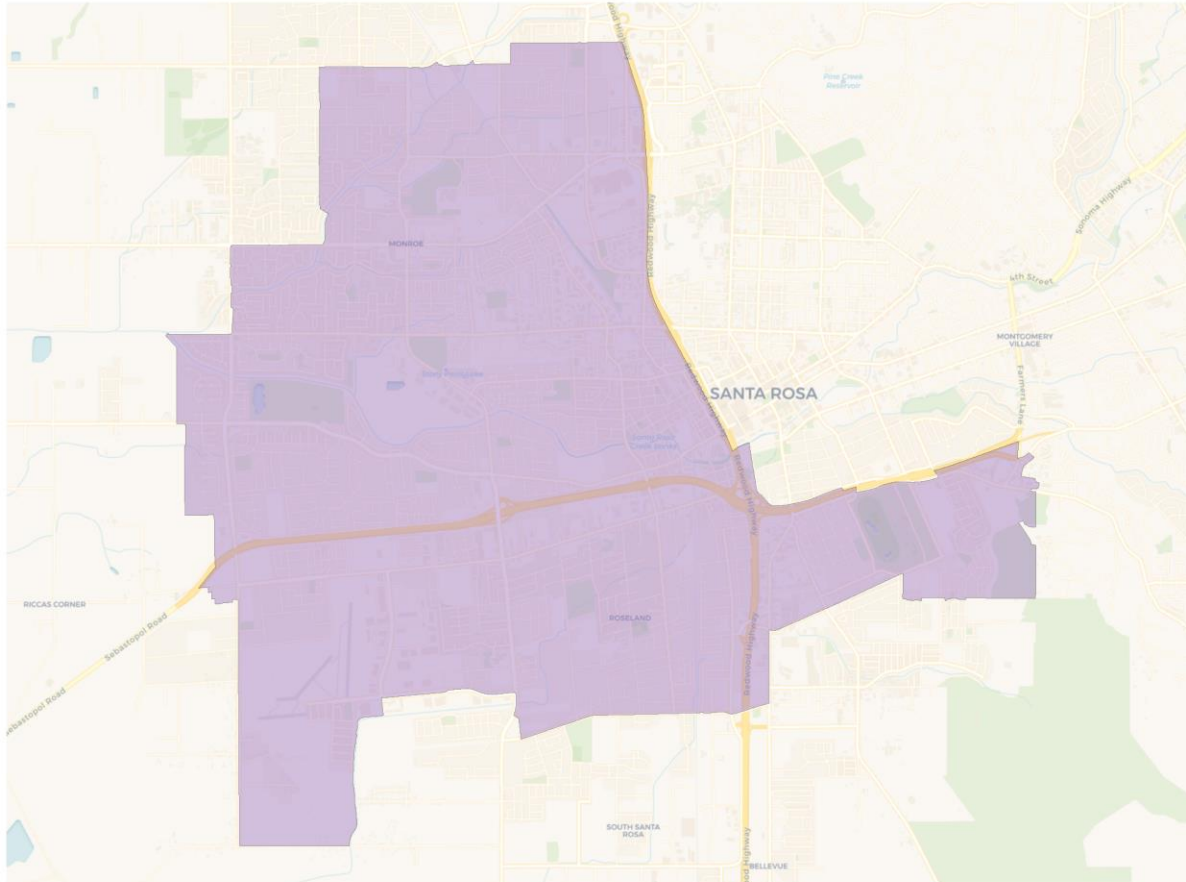


## Citizen Voting Age Population

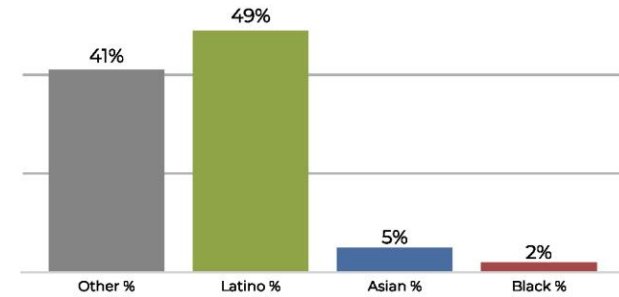


Population	Deviation	Deviation %	Other	Other %	Latino	Latino %	Asian	Asian %	Black	Black %
69,646	-940	-1.3%	40,208	57.7%	22,232	31.9%	5,732	8.2%	1,474	2.1%
Total CVAP	Other CVAP	Other CVAP %	Latino CVAP	Latino CVAP %	Asian CVAP	Asian CVAP %	Black CVAP	Black CVAP %		
45,949	33,814	73.6%	9,141	19.9%	1,991	4.3%	1,004	2.2%		

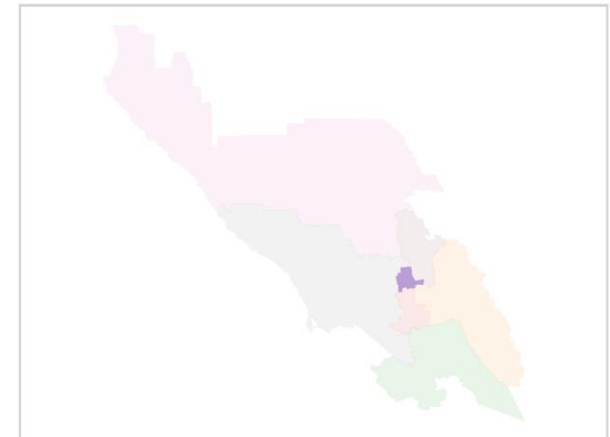
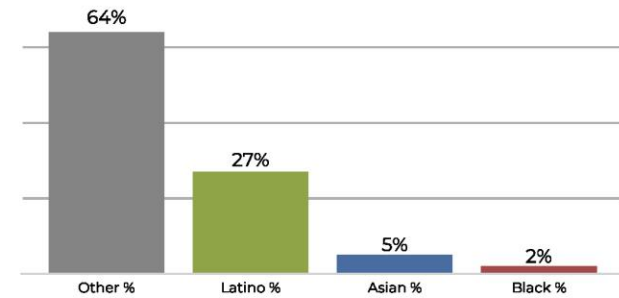
## District 4



## 2020 Census

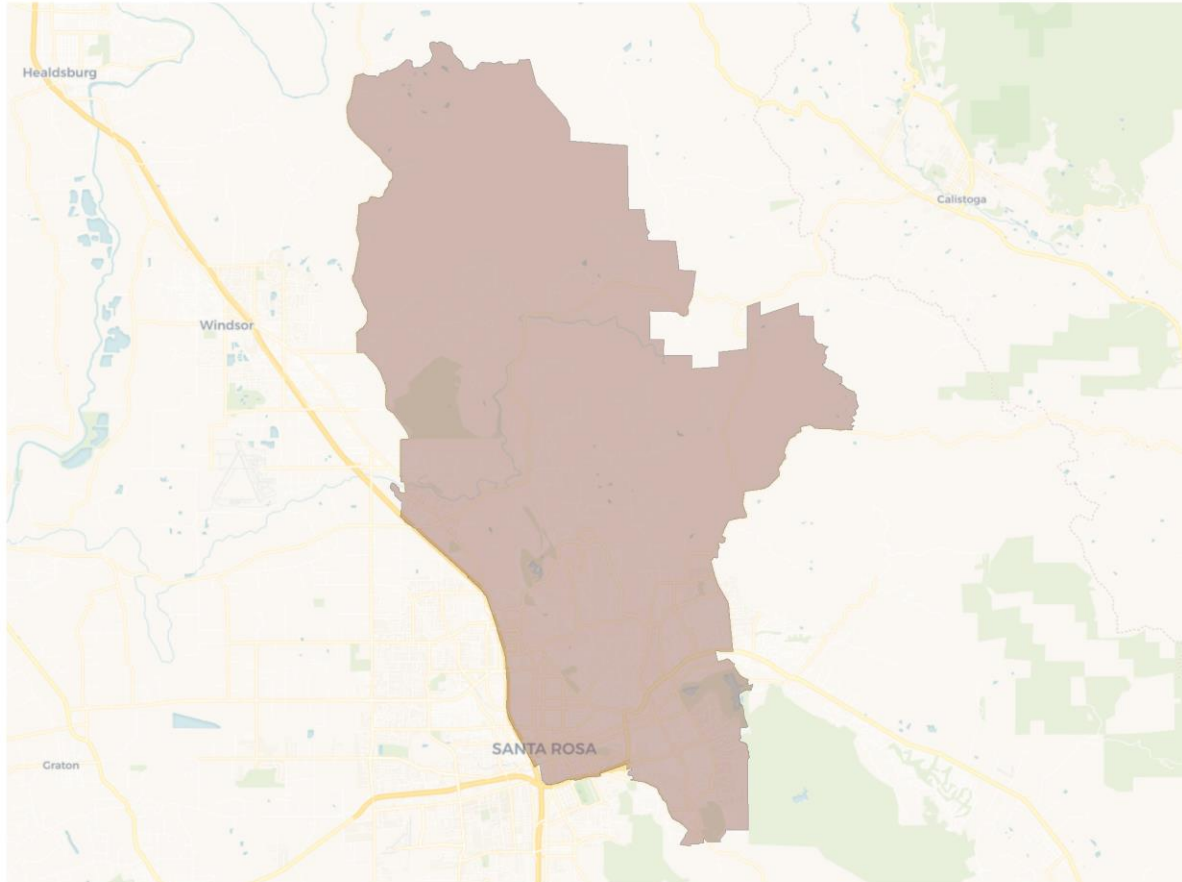


## Citizen Voting Age Population

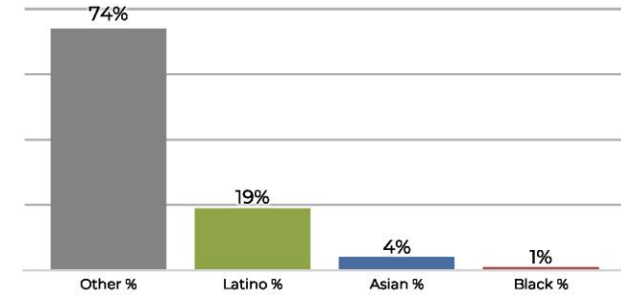


Population	Deviation	Deviation %	Other	Other %	Latino	Latino %	Asian	Asian %	Black	Black %
72,837	2,251	3.2%	30,342	41.7%	36,373	49.9%	4,329	5.9%	1,793	2.5%
Total CVAP	Other CVAP	Other CVAP %	Latino CVAP	Latino CVAP %	Asian CVAP	Asian CVAP %	Black CVAP	Black CVAP %		
41,960	27,087	64.6%	11,610	27.7%	2,288	5.5%	975	2.3%		

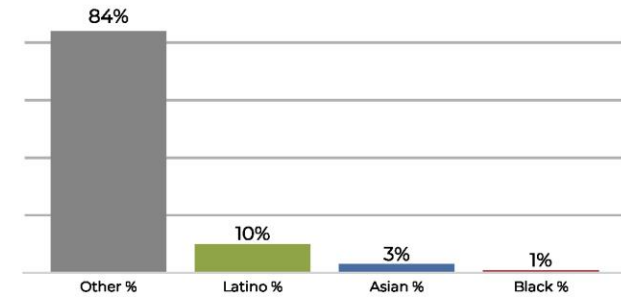
## District 5



## 2020 Census



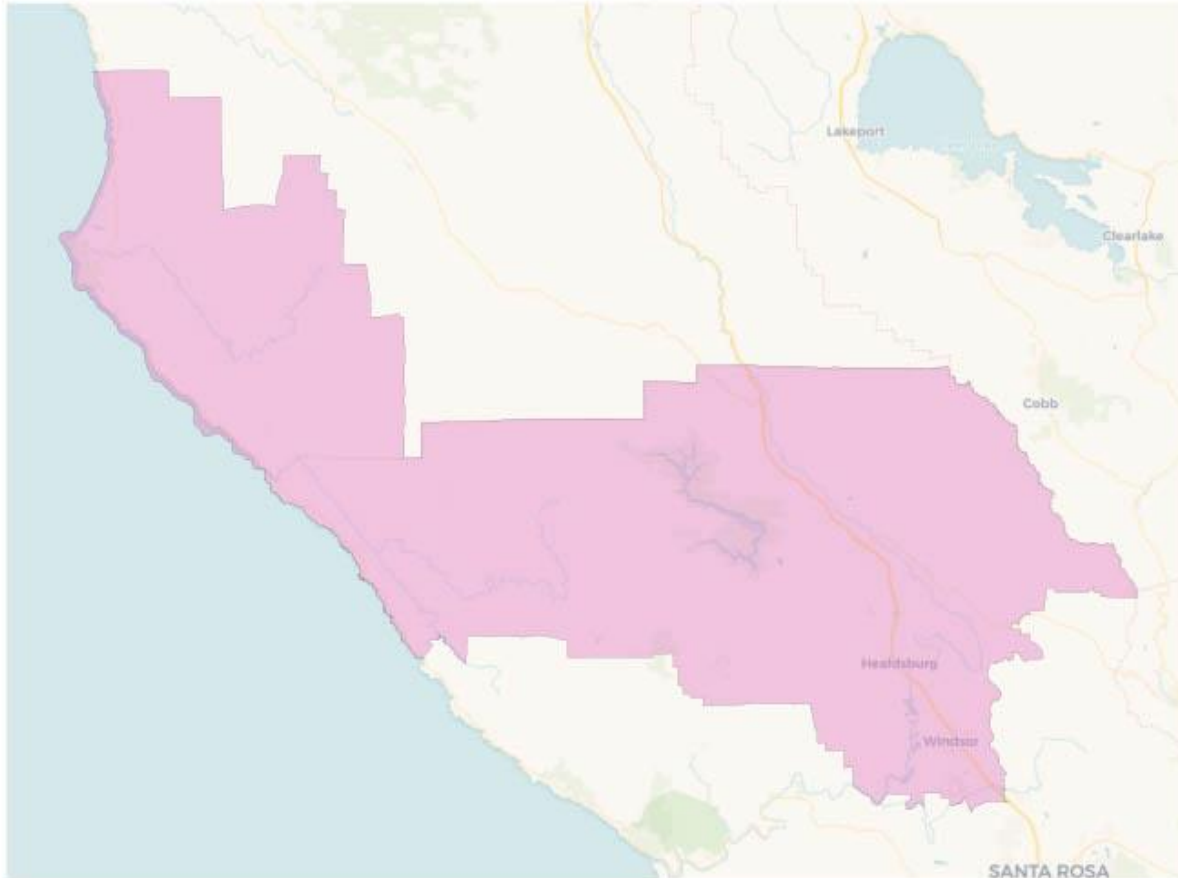
## Citizen Voting Age Population



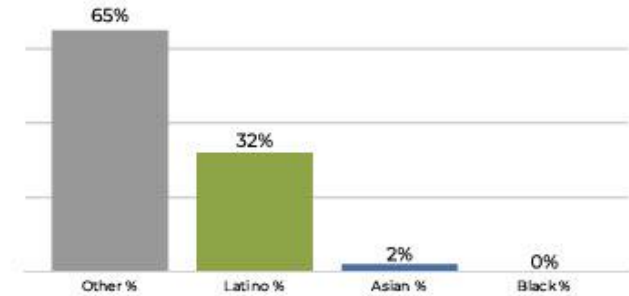
Population	Deviation	Deviation %	Other	Other %	Latino	Latino %	Asian	Asian %	Black	Black %
71,334	748	1.1%	53,412	74.9%	13,635	19.1%	3,100	4.3%	1,187	1.7%
Total CVAP	Other CVAP	Other CVAP %	Latino CVAP	Latino CVAP %	Asian CVAP	Asian CVAP %	Black CVAP	Black CVAP %		
56,589	47,527	84.0%	6,026	10.6%	2,211	3.9%	825	1.5%		



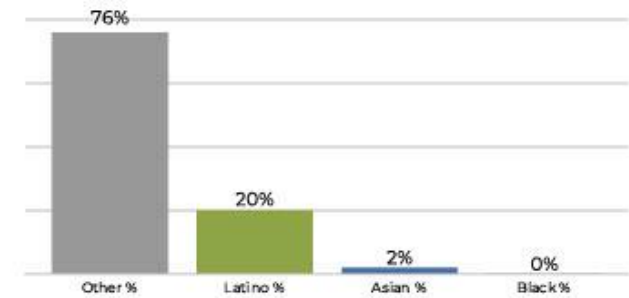
## District 6



## 2020 Census



## Citizen Voting Age Population

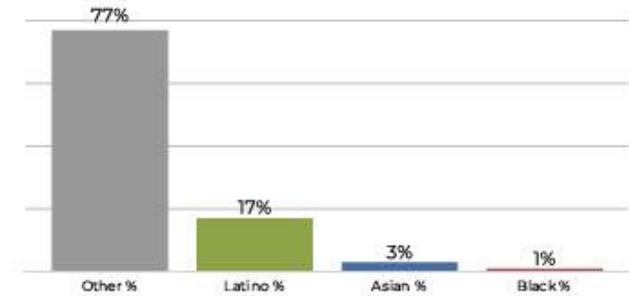


Population	Deviation	Deviation %	Other	Other %	Latino	Latino %	Asian	Asian %	Black	Black %
67,920	-2,666	-3.8%	44,293	65.2%	21,809	32.1%	1,349	2.0%	469	0.7%
Total CVAP	Other CVAP	Other CVAP %	Latino CVAP	Latino CVAP %	Asian CVAP	Asian CVAP %	Black CVAP	Black CVAP %		
50,205	38,518	76.7%	10,142	20.2%	1,182	2.4%	362	0.7%		

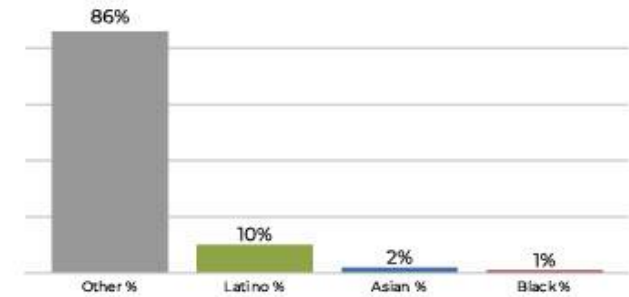
## District 7



## 2020 Census



## Citizen Voting Age Population

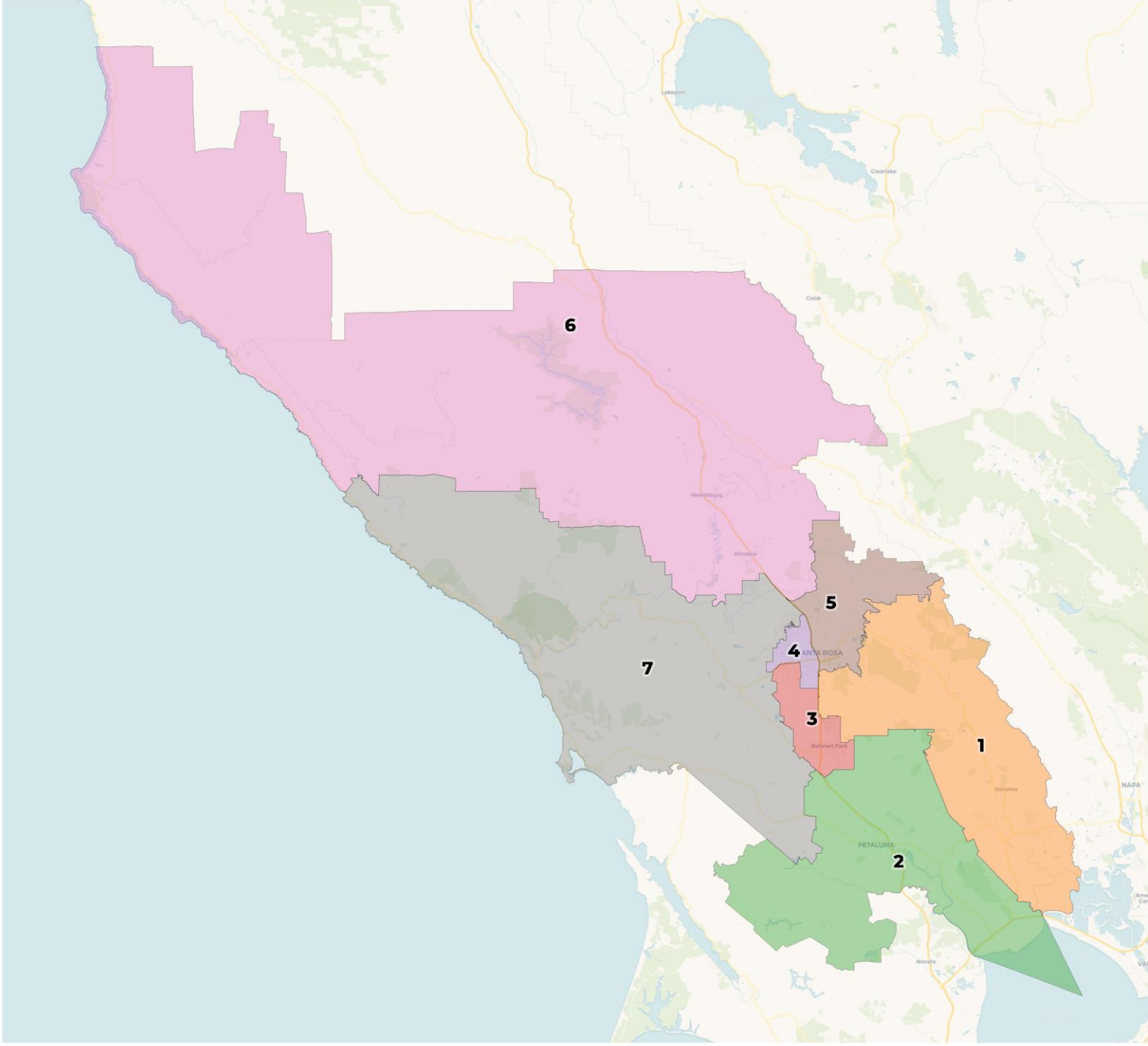


Population	Deviation	Deviation %	Other	Other %	Latino	Latino %	Asian	Asian %	Black	Black %
70,940	354	0.5%	55,290	77.9%	12,706	17.9%	2,107	3.0%	837	1.2%
Total CVAP	Other CVAP	Other CVAP %	Latino CVAP	Latino CVAP %	Asian CVAP	Asian CVAP %	Black CVAP	Black CVAP %		
59,472	51,552	86.7%	6,051	10.2%	1,210	2.0%	659	1.1%		



**REDISTRICTING  
PARTNERS**

## Santa Rosa - Sonoma CCD Plan B



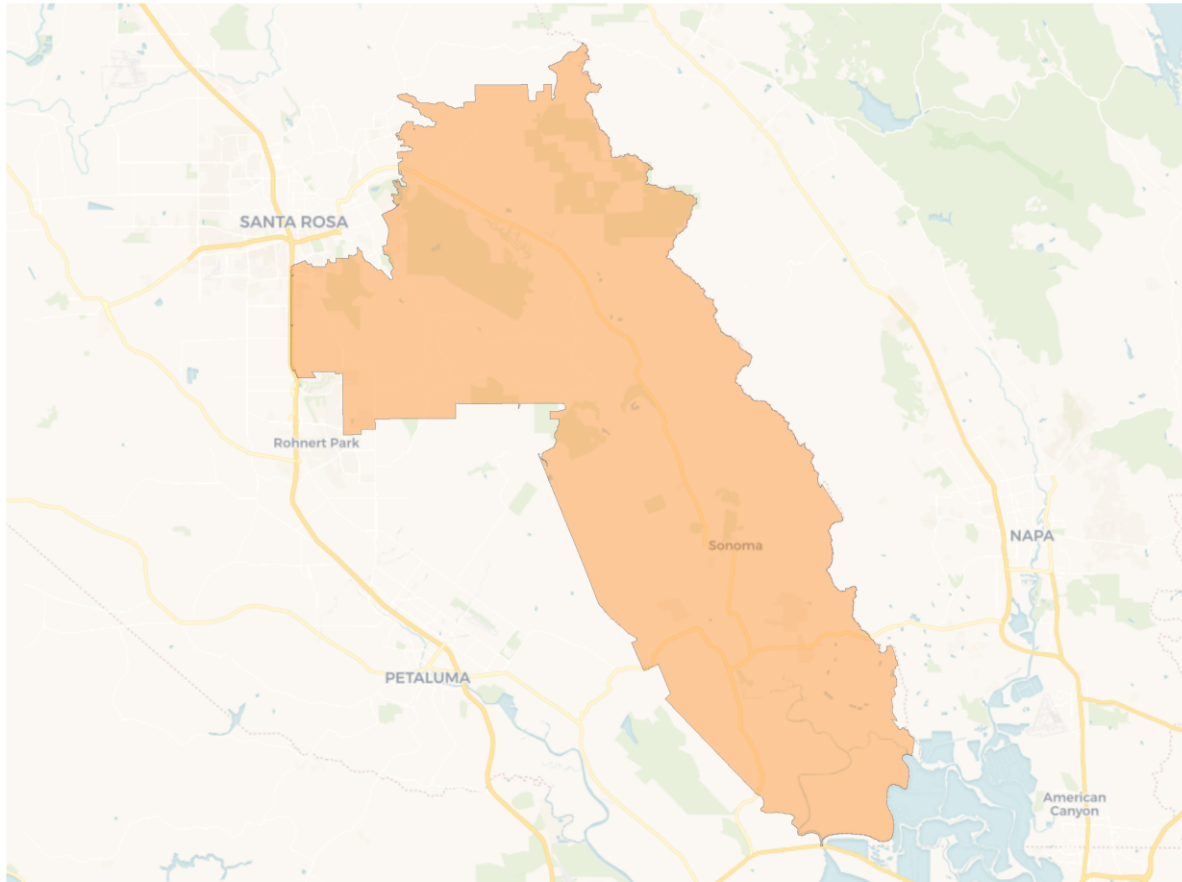
## 2020 Census

	1	2	3	4	5	6	7
Population	73,254	72,779	67,261	68,453	72,607	71,509	68,240
Deviation	2,668	2,193	-3,325	-2,133	2,021	923	-2,346
Deviation %	3.8%	3.1%	-4.7%	-3.0%	2.9%	1.3%	-3.3%
Other	49,341	53,147	38,215	28,851	51,039	47,237	54,166
Other %	67.4%	73.0%	56.8%	42.1%	70.3%	66.1%	79.4%
Latino	20,123	15,705	22,310	34,069	16,686	22,358	11,321
Latino %	27.5%	21.6%	33.2%	49.8%	23.0%	31.3%	16.6%
Asian	3,088	3,065	5,208	3,931	3,561	1,439	1,996
Asian %	4.2%	4.2%	7.7%	5.7%	4.9%	2.0%	2.9%
Black	702	862	1,528	1,602	1,321	475	757
Black %	1.0%	1.2%	2.3%	2.3%	1.8%	0.7%	1.1%

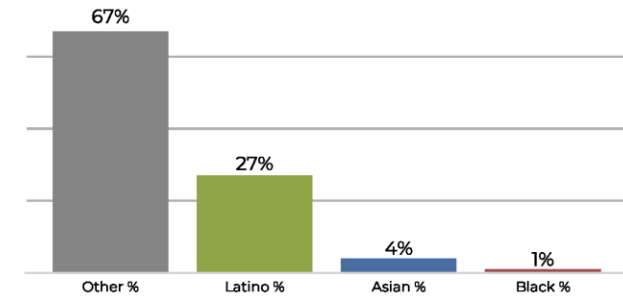
## Citizen Voting Age Population (CVAP)

	1	2	3	4	5	6	7
Total CVAP	54,606	54,331	45,846	41,296	54,438	52,348	58,252
Other CVAP	44,987	44,982	32,600	26,362	44,282	40,387	50,659
Other CVAP %	82.4%	82.8%	71.1%	63.8%	81.3%	77.2%	87.0%
Latino CVAP	7,088	6,823	9,924	11,886	6,750	10,351	5,920
Latino CVAP %	13.0%	12.6%	21.6%	28.8%	12.4%	19.8%	10.2%
Asian CVAP	1,969	1,963	2,360	2,119	2,306	1,292	1,130
Asian CVAP %	3.6%	3.6%	5.1%	5.1%	4.2%	2.5%	1.9%
Black CVAP	562	563	962	929	1,100	318	543
Black CVAP %	1.0%	1.0%	2.1%	2.2%	2.0%	0.6%	0.9%

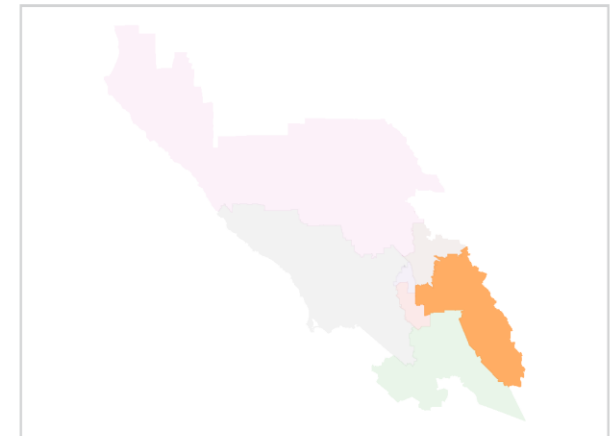
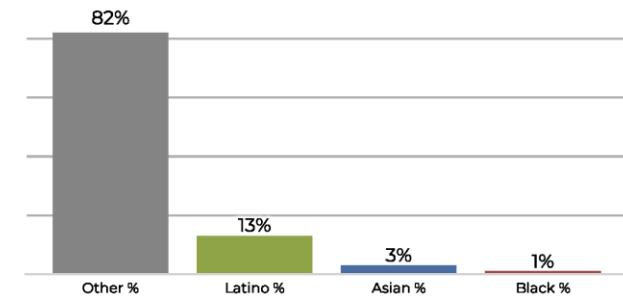
## District 1



## 2020 Census



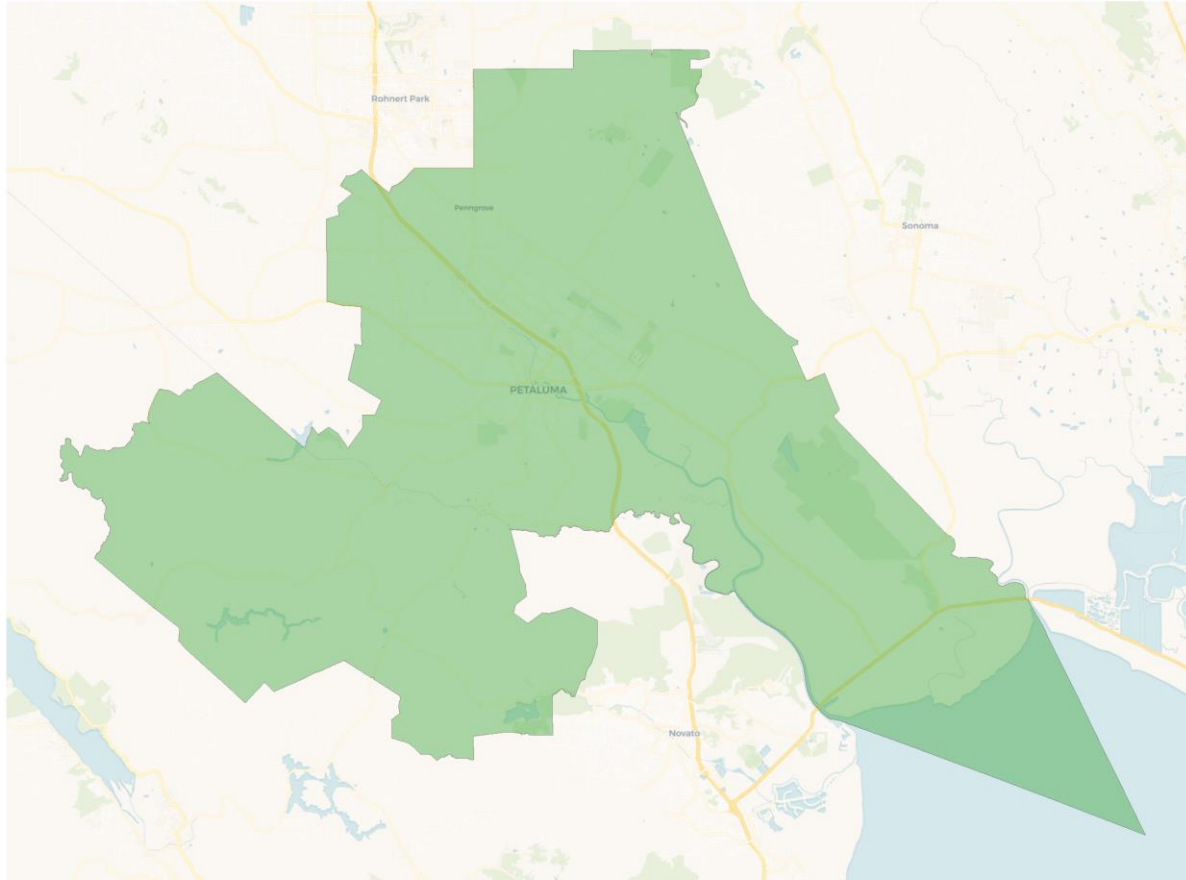
## Citizen Voting Age Population



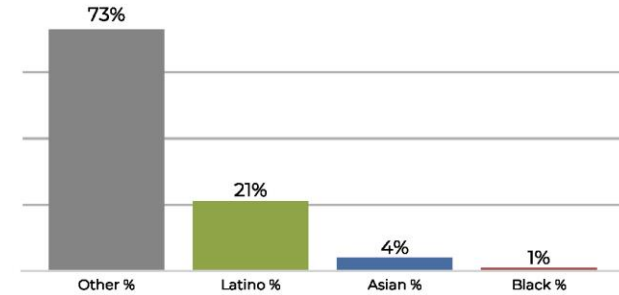
Population	Deviation	Deviation %	Other	Other %	Latino	Latino %	Asian	Asian %	Black	Black %
73,254	2,668	3.8%	49,341	67.4%	20,123	27.5%	3,088	4.2%	702	1.0%
Total CVAP	Other CVAP	Other CVAP %	Latino CVAP	Latino CVAP %	Asian CVAP	Asian CVAP %	Black CVAP	Black CVAP %		
54,606	44,987	82.4%	7,088	13.0%	1,969	3.6%	562	1.0%		



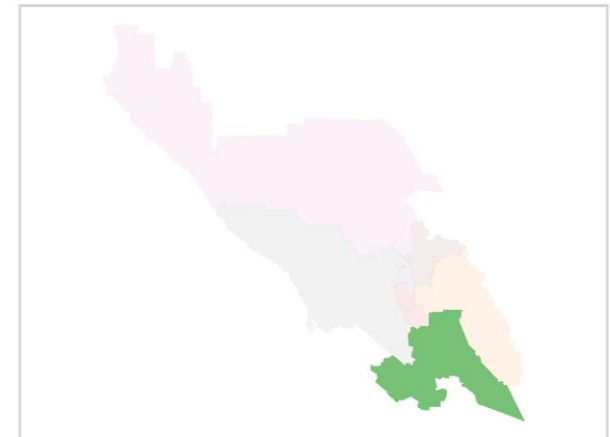
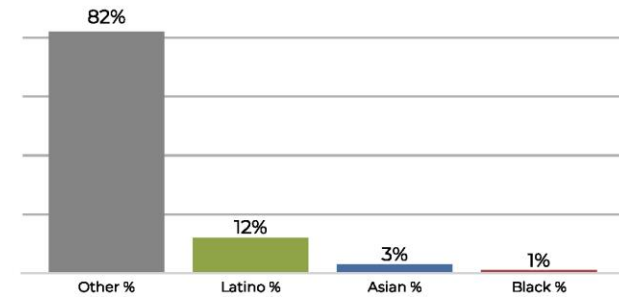
## District 2



## 2020 Census

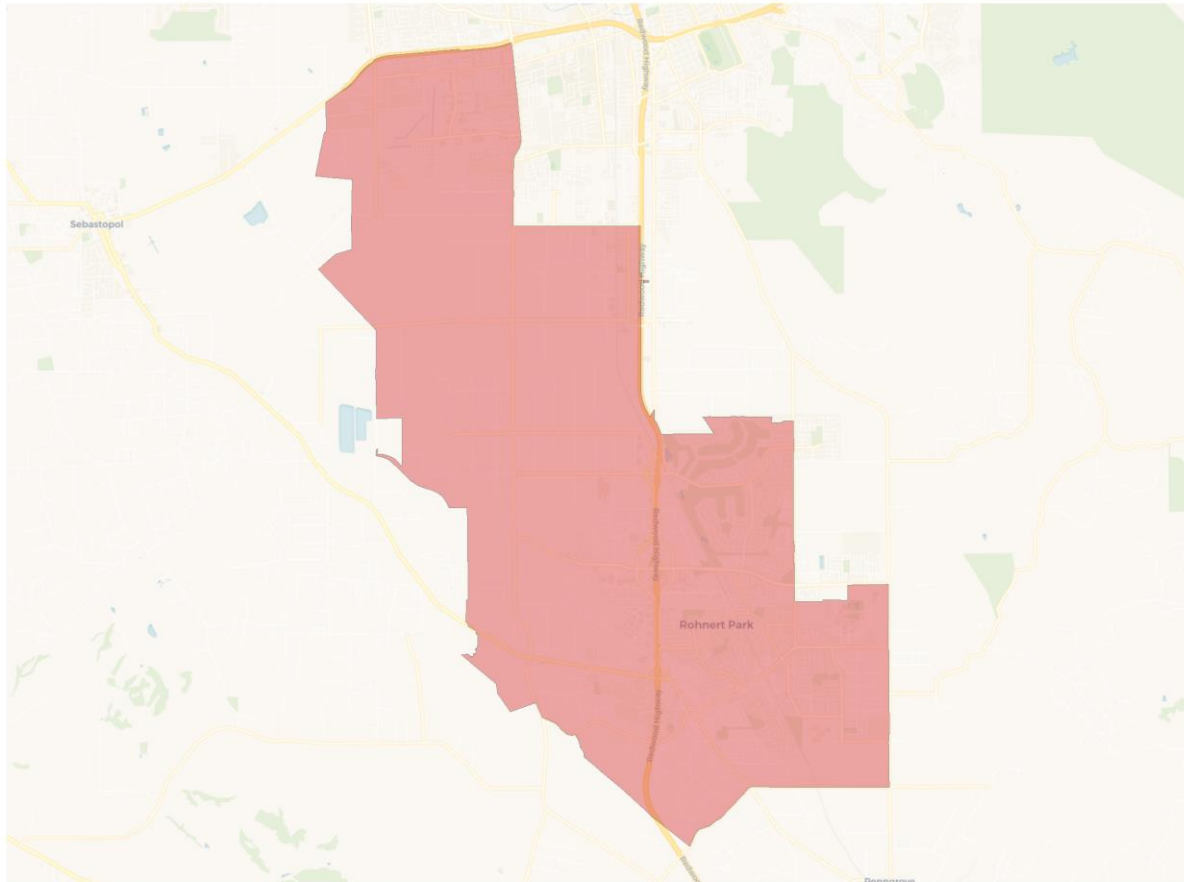


## Citizen Voting Age Population

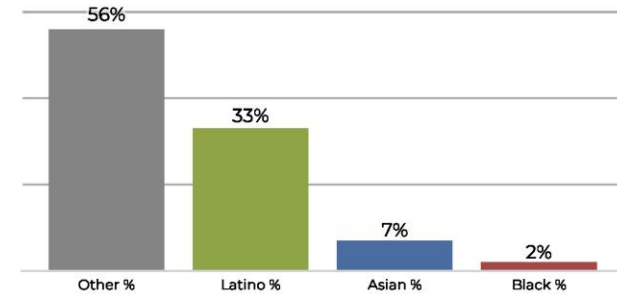


Population	Deviation	Deviation %	Other	Other %	Latino	Latino %	Asian	Asian %	Black	Black %
72,779	2,193	3.1%	53,147	73.0%	15,705	21.6%	3,065	4.2%	862	1.2%
Total CVAP	Other CVAP	Other CVAP %	Latino CVAP	Latino CVAP %	Asian CVAP	Asian CVAP %	Black CVAP	Black CVAP %		
54,331	44,982	82.8%	6,823	12.6%	1,963	3.6%	563	1.0%		

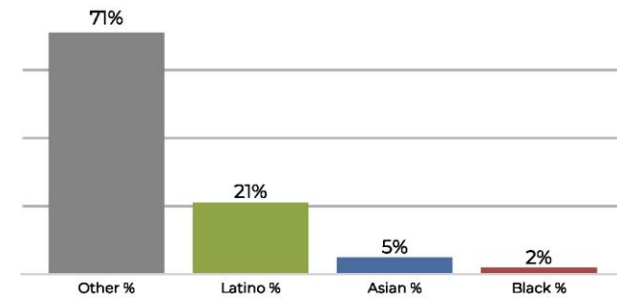
## District 3



## 2020 Census

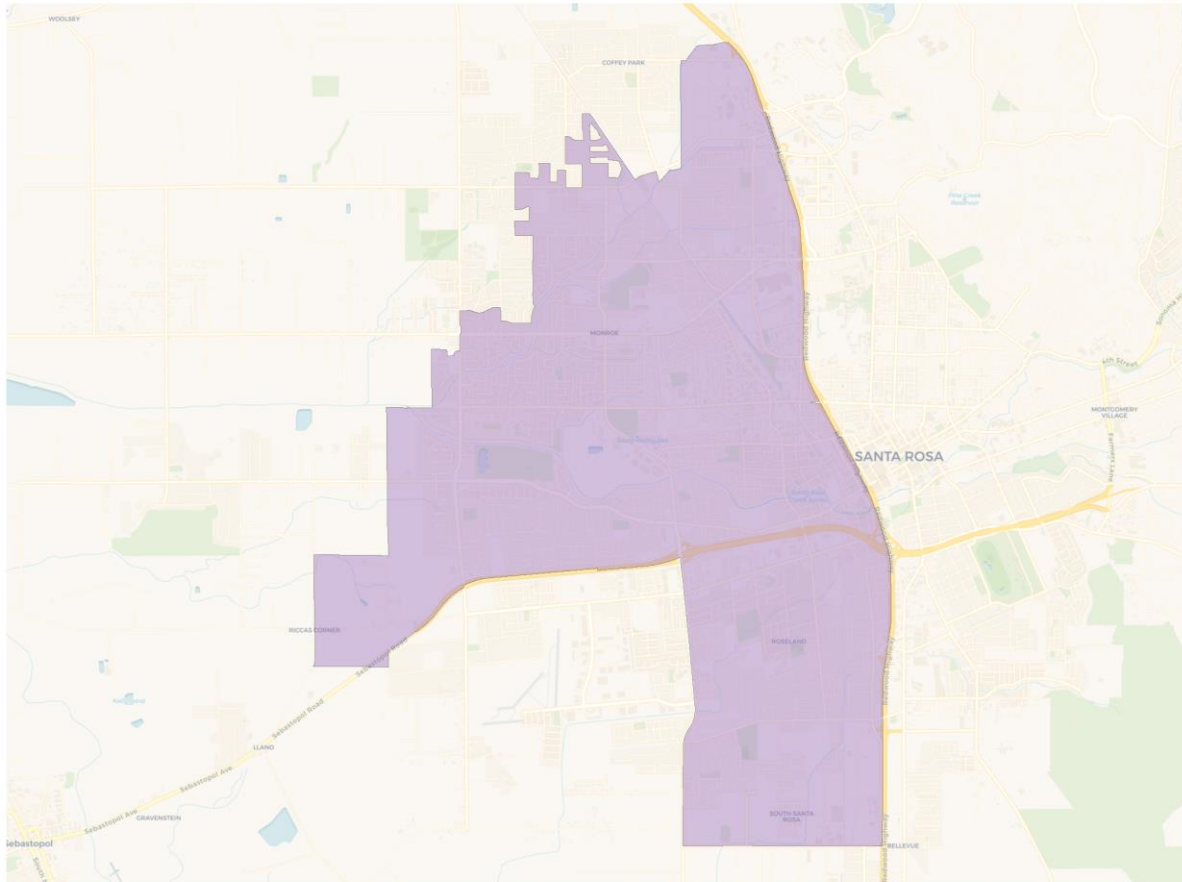


## Citizen Voting Age Population

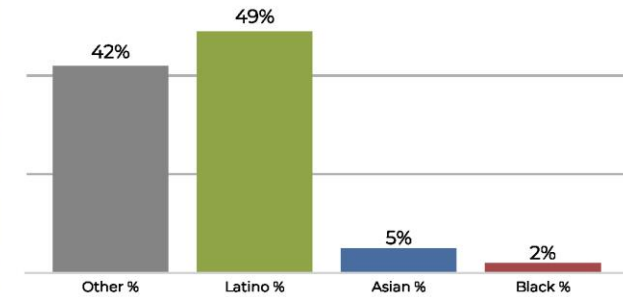


Population	Deviation	Deviation %	Other	Other %	Latino	Latino %	Asian	Asian %	Black	Black %
67,261	-3,325	-4.7%	38,215	56.8%	22,310	33.2%	5,208	7.7%	1,528	2.3%
Total CVAP	Other CVAP	Other CVAP %	Latino CVAP	Latino CVAP %	Asian CVAP	Asian CVAP %	Black CVAP	Black CVAP %		
45,846	32,600	71.1%	9,924	21.6%	2,360	5.1%	962	2.1%		

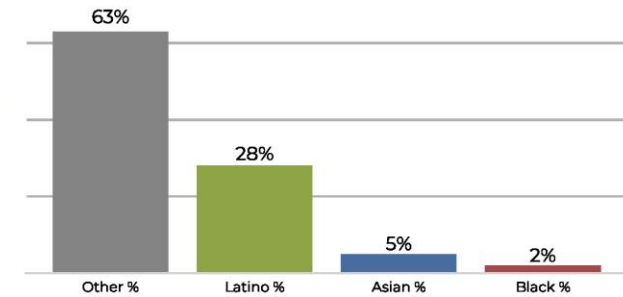
## District 4



## 2020 Census



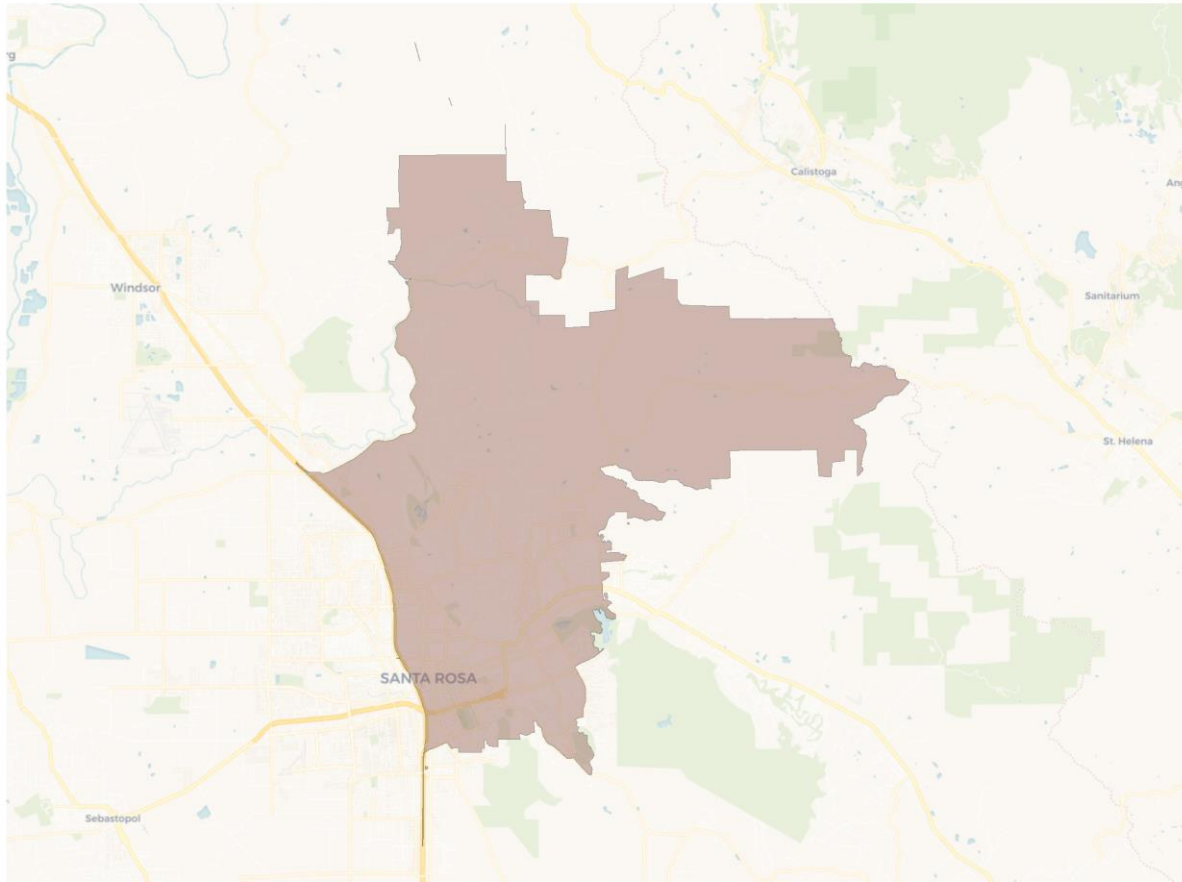
## Citizen Voting Age Population



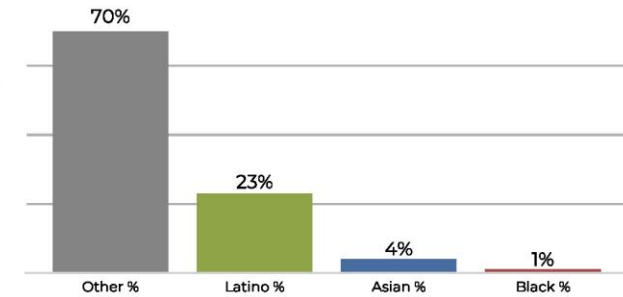
Population	Deviation	Deviation %	Other	Other %	Latino	Latino %	Asian	Asian %	Black	Black %
68,453	-2,133	-3.0%	28,851	42.1%	34,069	49.8%	3,931	5.7%	1,602	2.3%
Total CVAP	Other CVAP	Other CVAP %	Latino CVAP	Latino CVAP %	Asian CVAP	Asian CVAP %	Black CVAP	Black CVAP %		
41,296	26,362	63.8%	11,886	28.8%	2,119	5.1%	929	2.2%		



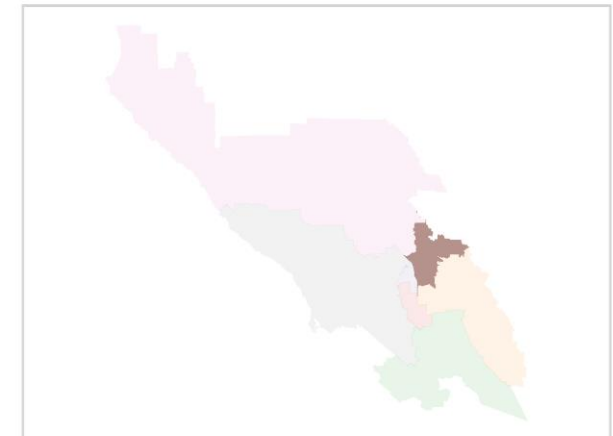
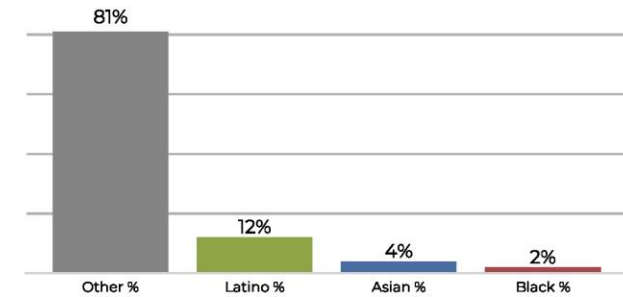
## District 5



## 2020 Census

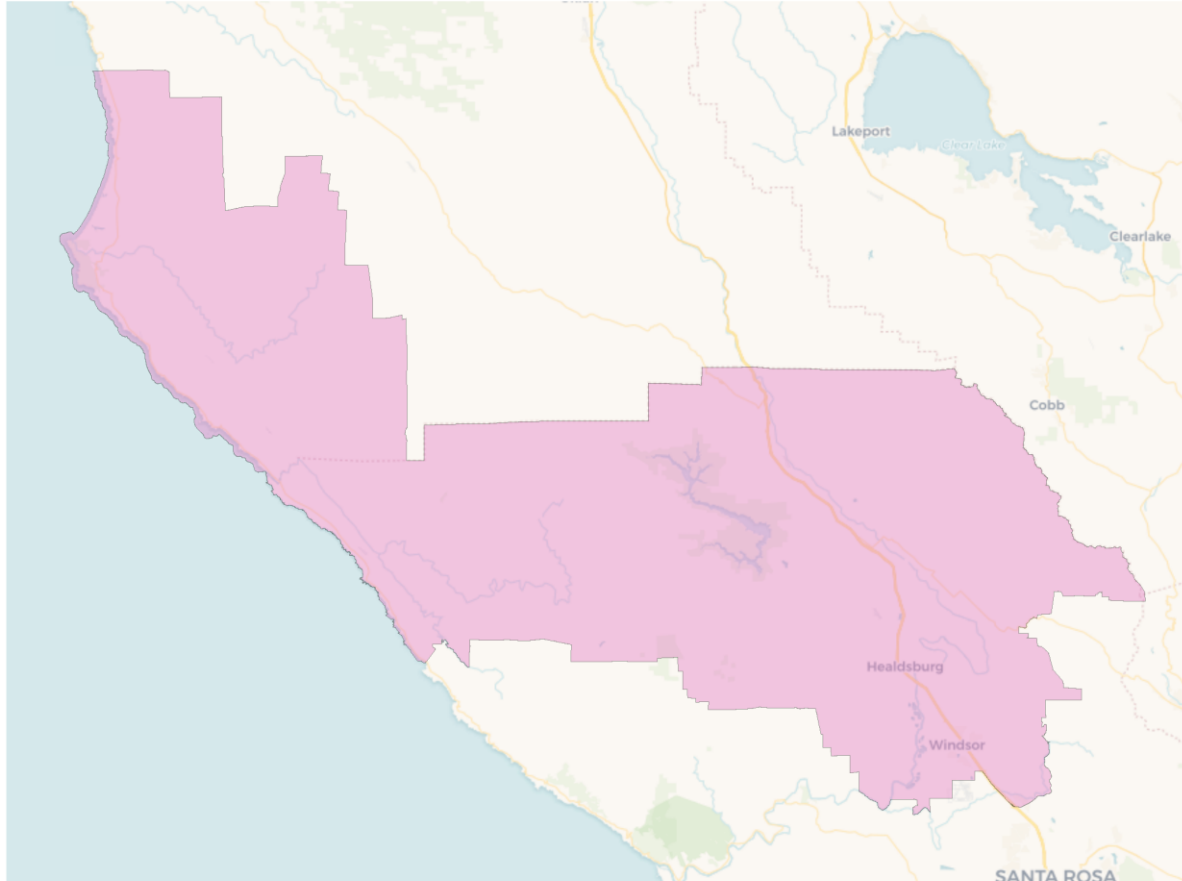


## Citizen Voting Age Population

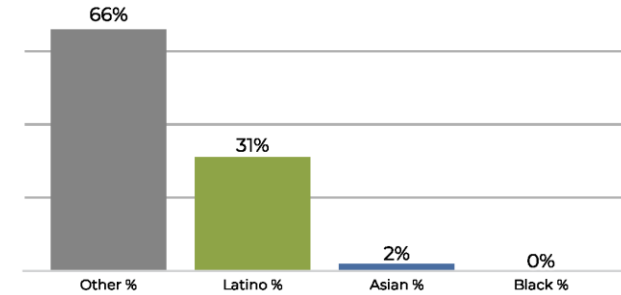


Population	Deviation	Deviation %	Other	Other %	Latino	Latino %	Asian	Asian %	Black	Black %
72,607	2,021	2.9%	51,039	70.3%	16,686	23.0%	3,561	4.9%	1,321	1.8%
Total CVAP	Other CVAP	Other CVAP %	Latino CVAP	Latino CVAP %	Asian CVAP	Asian CVAP %	Black CVAP	Black CVAP %		
54,438	44,282	81.3%	6,750	12.4%	2,306	4.2%	1,100	2.0%		

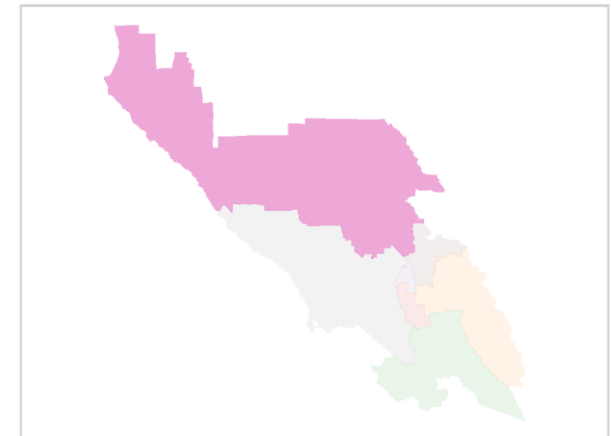
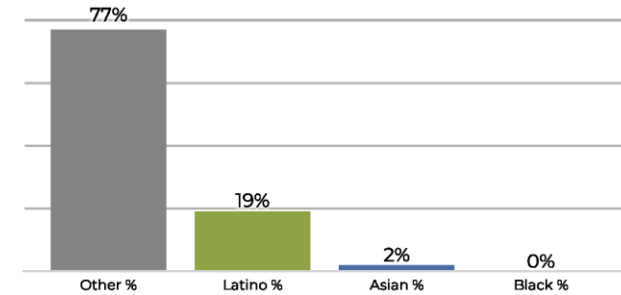
## District 6



## 2020 Census

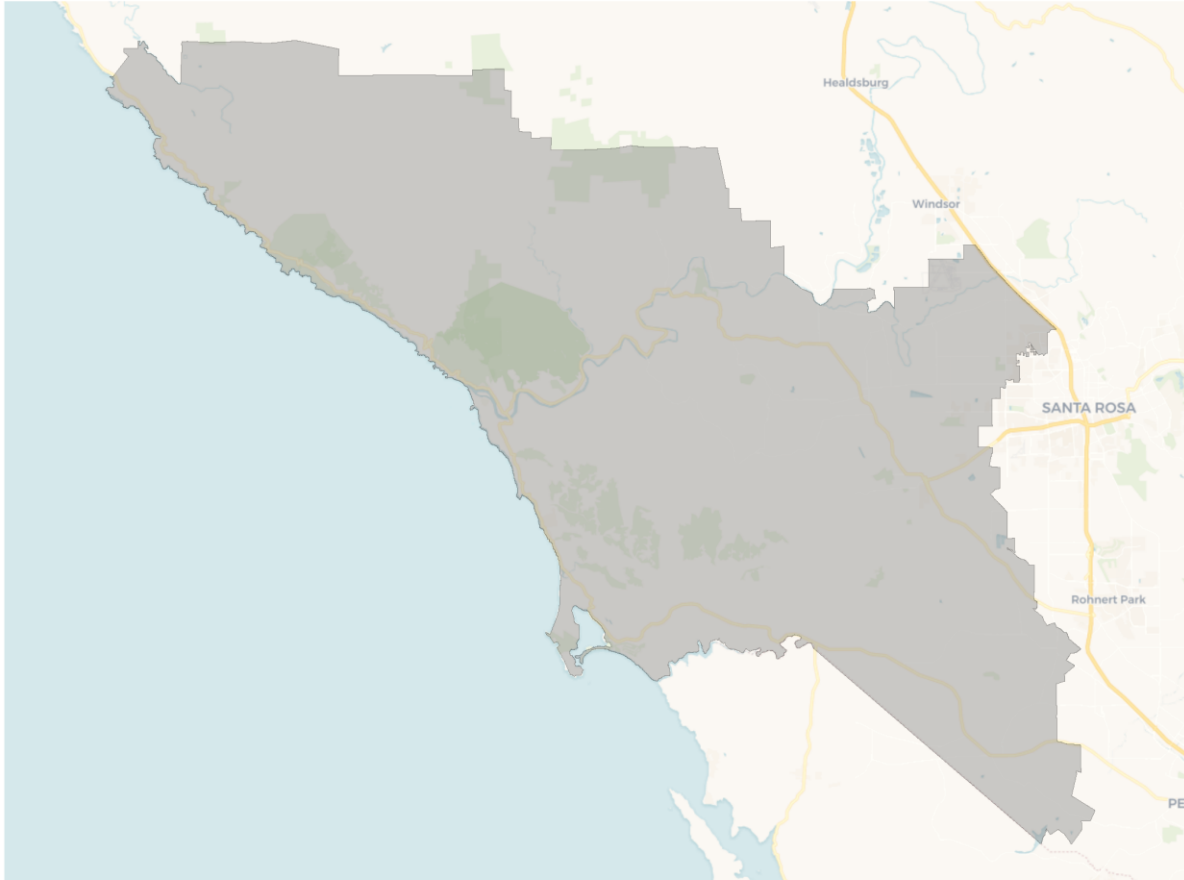


## Citizen Voting Age Population

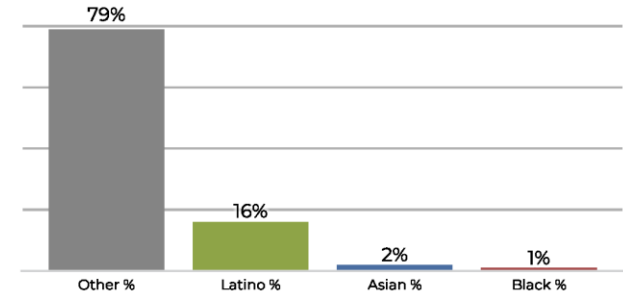


Population	Deviation	Deviation %	Other	Other %	Latino	Latino %	Asian	Asian %	Black	Black %
71,509	923	1.3%	47,237	66.1%	22,358	31.3%	1,439	2.0%	475	0.7%
Total CVAP	Other CVAP	Other CVAP %	Latino CVAP	Latino CVAP %	Asian CVAP	Asian CVAP %	Black CVAP	Black CVAP %		
52,348	40,387	77.2%	10,351	19.8%	1,292	2.5%	318	0.6%		

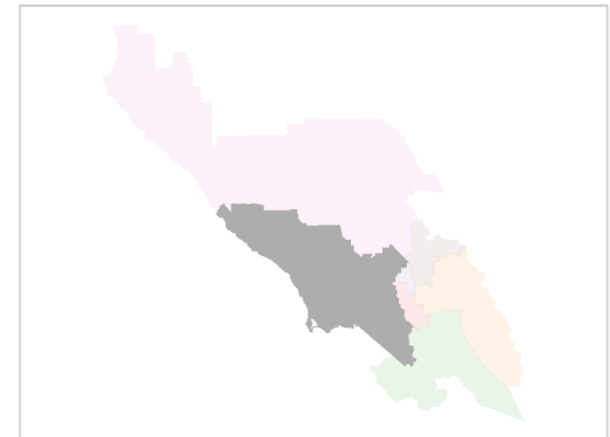
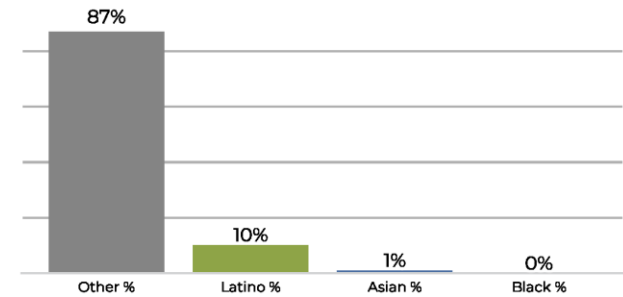
## District 7



## 2020 Census



## Citizen Voting Age Population



Population	Deviation	Deviation %	Other	Other %	Latino	Latino %	Asian	Asian %	Black	Black %
68,240	-2,346	-3.3%	54,166	79.4%	11,321	16.6%	1,996	2.9%	757	1.1%
Total CVAP	Other CVAP	Other CVAP %	Latino CVAP	Latino CVAP %	Asian CVAP	Asian CVAP %	Black CVAP	Black CVAP %		
58,252	50,659	87.0%	5,920	10.2%	1,130	1.9%	543	0.9%		